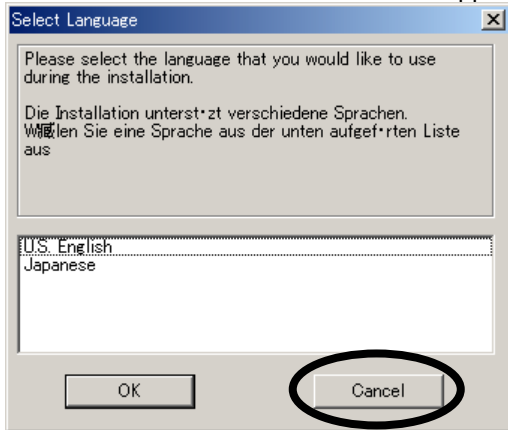
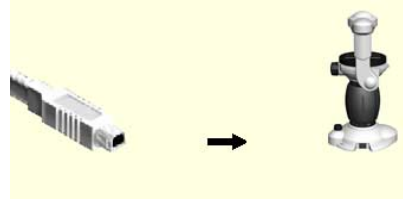
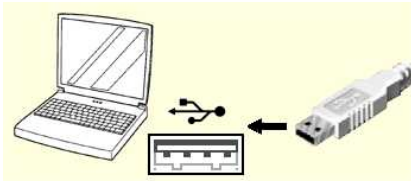


# Driver Installation Procedure (Microsoft® Windows® Millennium Edition)

1. Inactivate all applications.
2. Insert the CD-ROM of the software to the CD-ROM drive.
3. When the software installation window appears automatically, click the <Cancel> button to close it.



4. Connect the product to the PC with the provided USB cable.



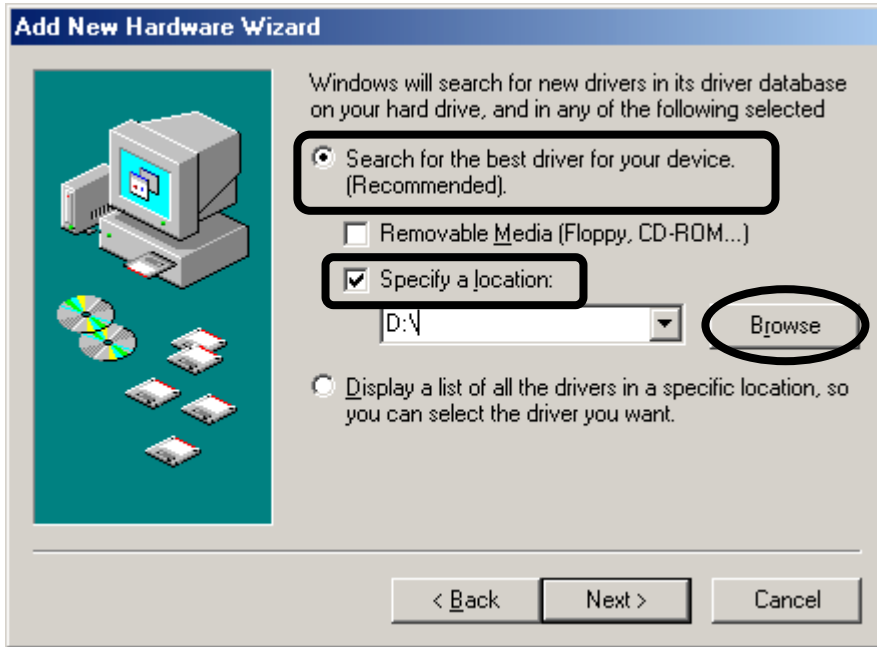
5. When the USB cable is connected, the [Add New Hardware Wizard] dialog box appears automatically. Select "Automatic search for a better driver" and click the <Next> button. If this dialog box does not appear automatically, update the driver (see page 7).



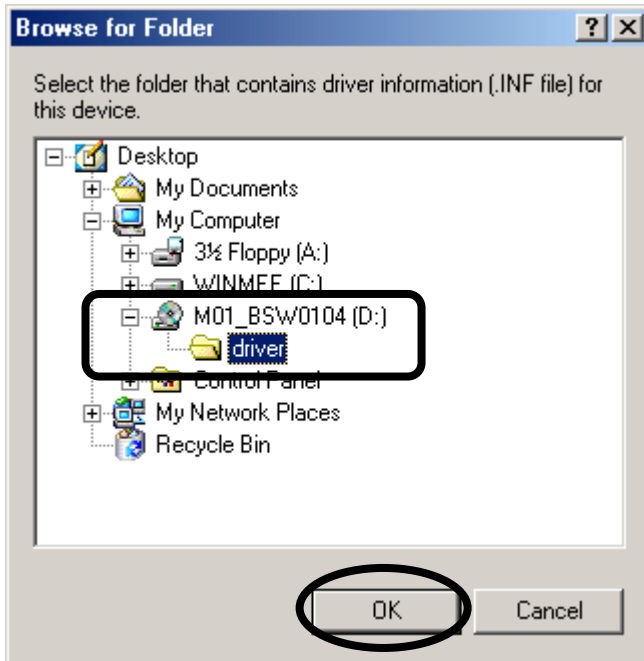
## Driver Installation/Updating Procedure



6. Select “Search for the best driver for your device”. Check the [Specify a location] check box and click the <Browse> button.



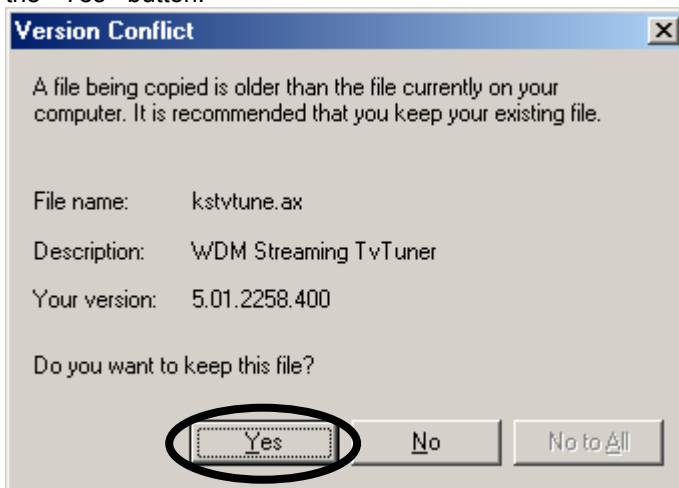
7. The [Browse for Folder] dialog box as shown below appears. Select the “CD-ROM drive name:\driver” folder and click the <OK> button.



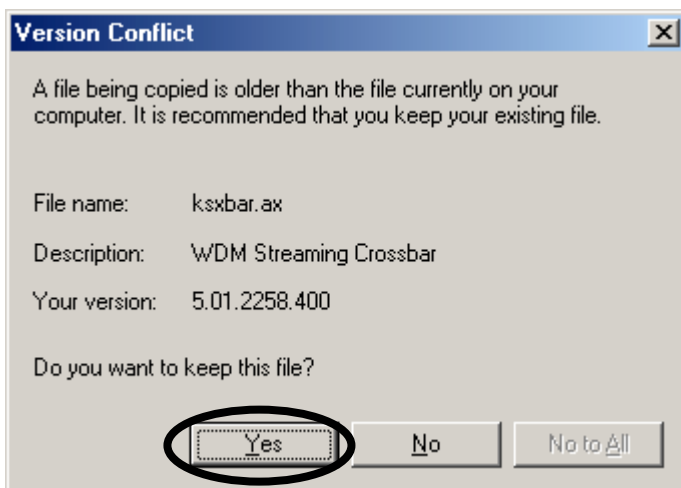
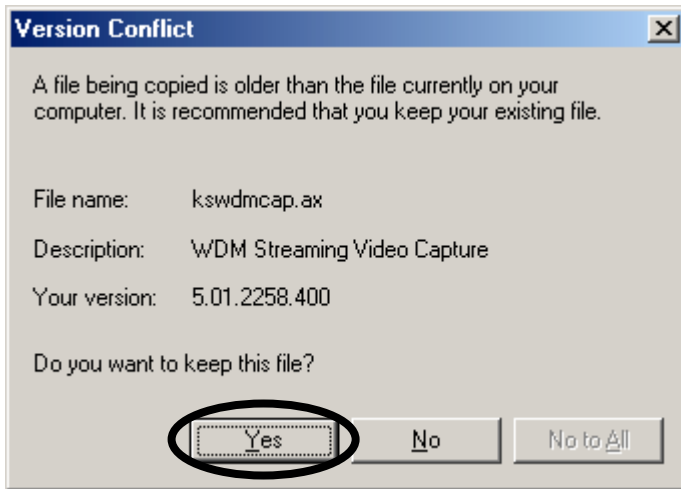
- When a dialog box appears, confirm that “CD-ROM drive name:\DRIVER\M01USB.INF” is shown under “Specify a location”. Then click the <Next> button to start installation of the driver.



- The [Version Conflict] dialog boxes as shown below may sometimes appear. In each of these cases, click the <Yes> button.



## Driver Installation/Updating Procedure

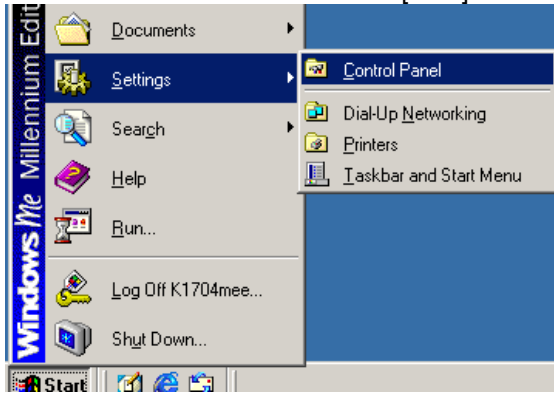


10. Click the <Finish> button. Now the driver installation is complete.

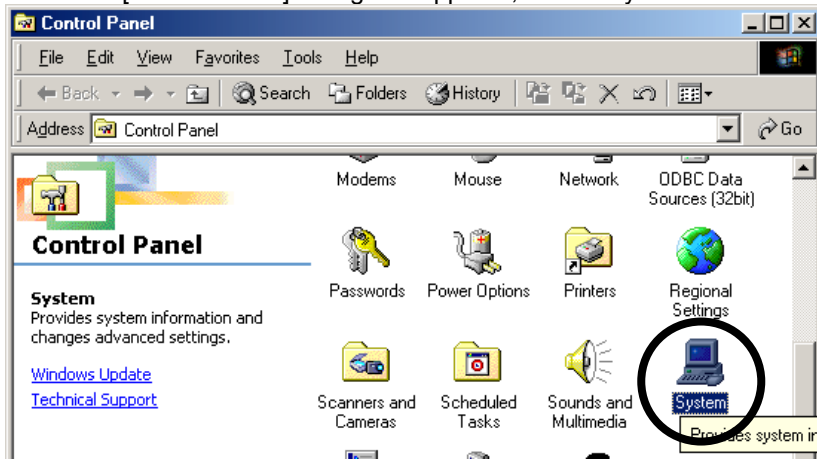


Next, check if the driver is installed properly.

11. Click the <Start> button. When the [Start] menu appears, select [Settings] – [Control Panel].

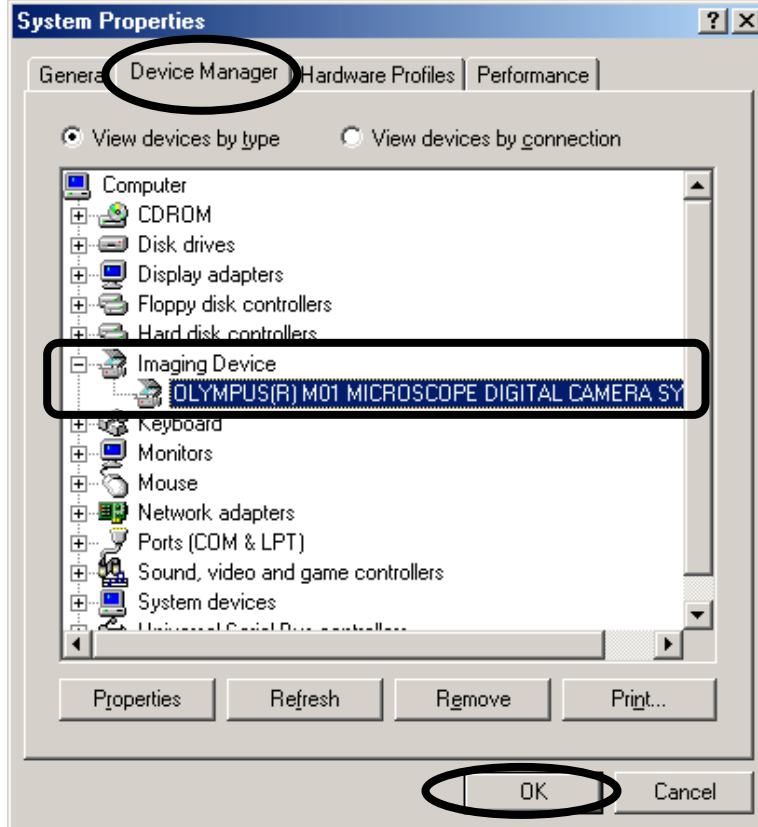


12. When the [Control Panel] dialog box appears, select "System".



## Driver Installation/Updating Procedure

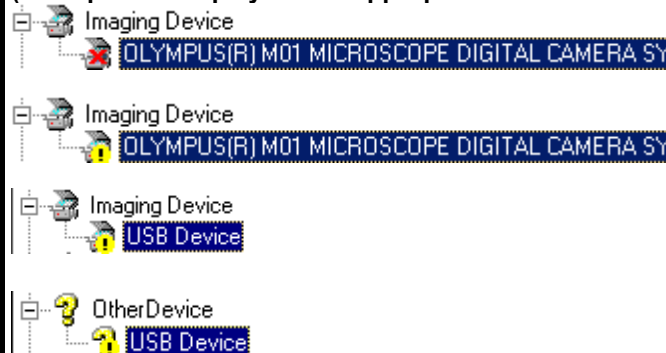
- When the [System Properties] dialog box appears, select the [Device Manager] tab. If the driver has been properly installed, "OLYMPUS(R) M01 MICROSCOPE DIGITAL CAMERA SYSTEM" should be displayed below "Imaging Devices". After confirming this, click the <OK> button.



### NOTE

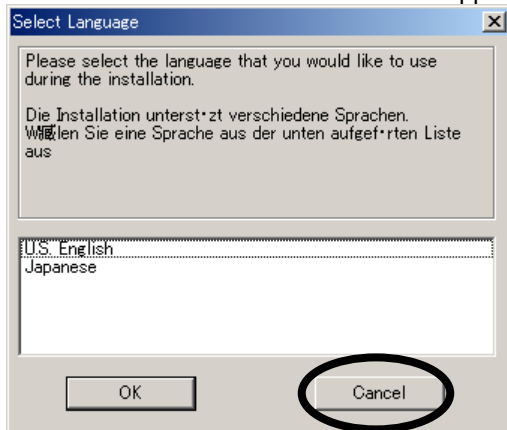
If marking such as "X", "?" or "!" is attached to the icon on the left of "OLYMPUS(R) M01 MICROSCOPE DIGITAL CAMERA SYSTEM", if a different name is displayed instead of "OLYMPUS(R) M01 MICROSCOPE DIGITAL CAMERA SYSTEM" or if "Imaging Device" is not displayed but "Unknown Device" or like is displayed below "Other Device", the driver is not installed properly. In this case, update the driver (see page 7).

(Examples of display after inappropriate driver installation)

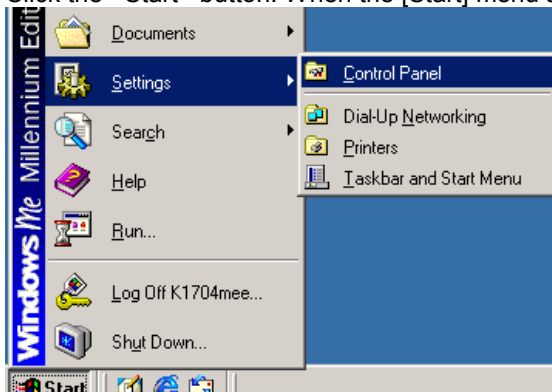


# Driver Updating Procedure (Microsoft® Windows® Millennium Edition)

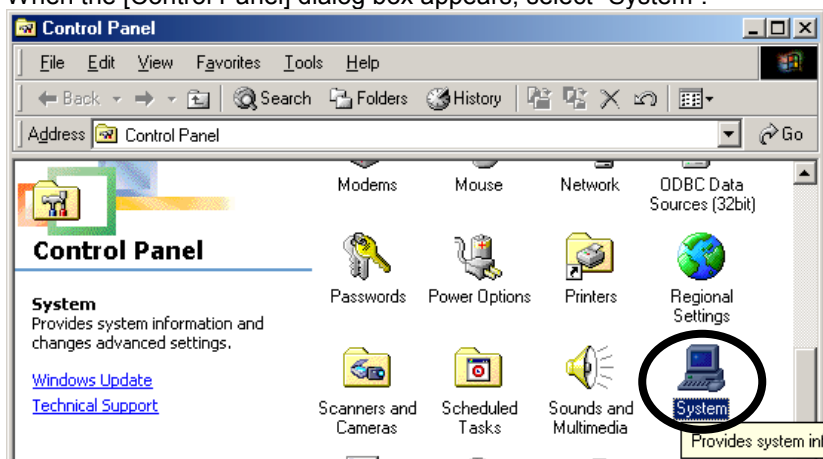
1. Connect the MIC-D to the PC.
2. Insert the CD-ROM of the software to the CD-ROM drive.
3. When the software installation window appears automatically, click the <Cancel> button to close it.



4. Click the <Start> button. When the [Start] menu appears, select [Settings] – [Control Panel].



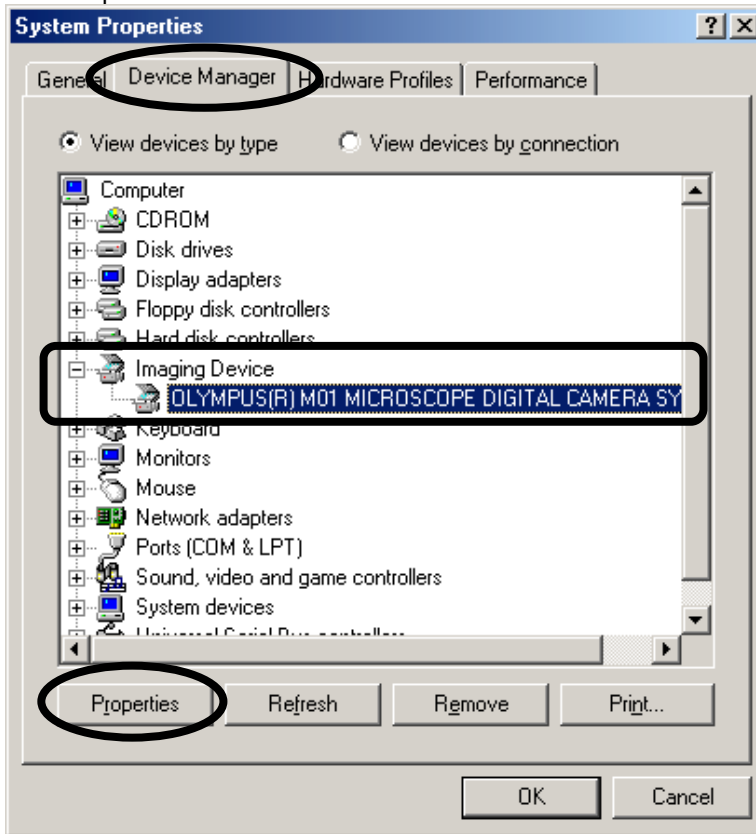
5. When the [Control Panel] dialog box appears, select "System".



## Driver Installation/Updating Procedure



6. When the [System Properties] dialog box appears, select the [Device Manager] tab. Select “OLYMPUS(R) M01 MICROSCOPE DIGITAL CAMERA SYSTEM” below “Imaging Device” and click the <Properties> button.



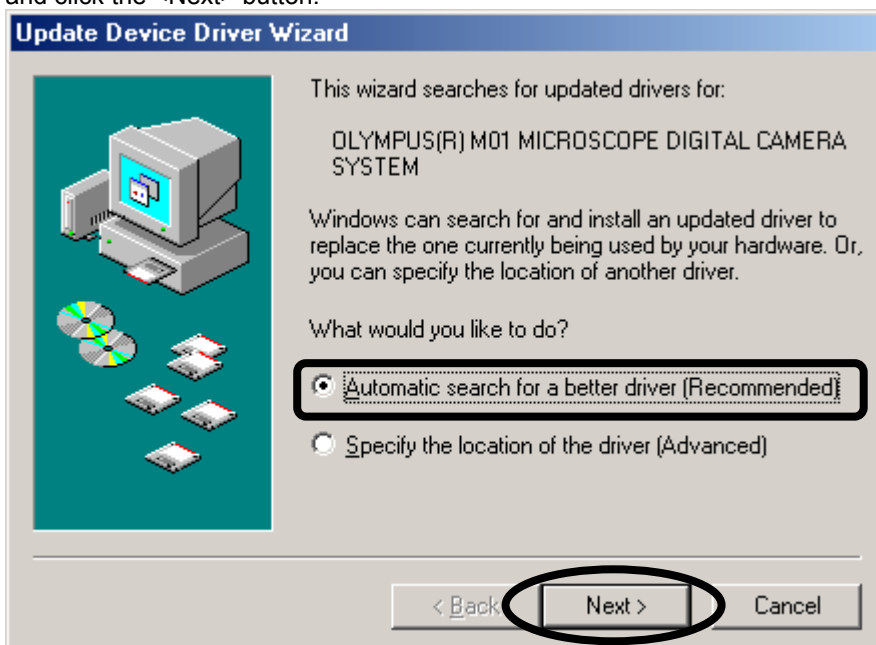
If “OLYMPUS(R) M01 MICROSCOPE DIGITAL CAMERA SYSTEM” or “Imaging Device” is not displayed, select “USB Device” below “Imaging Device” or select “Unknown Device” or “USB Device” below “Other Device”, and click the <Properties> button.



- When a dialog box appears, click the [Driver] tab and click the <Update Driver> button.

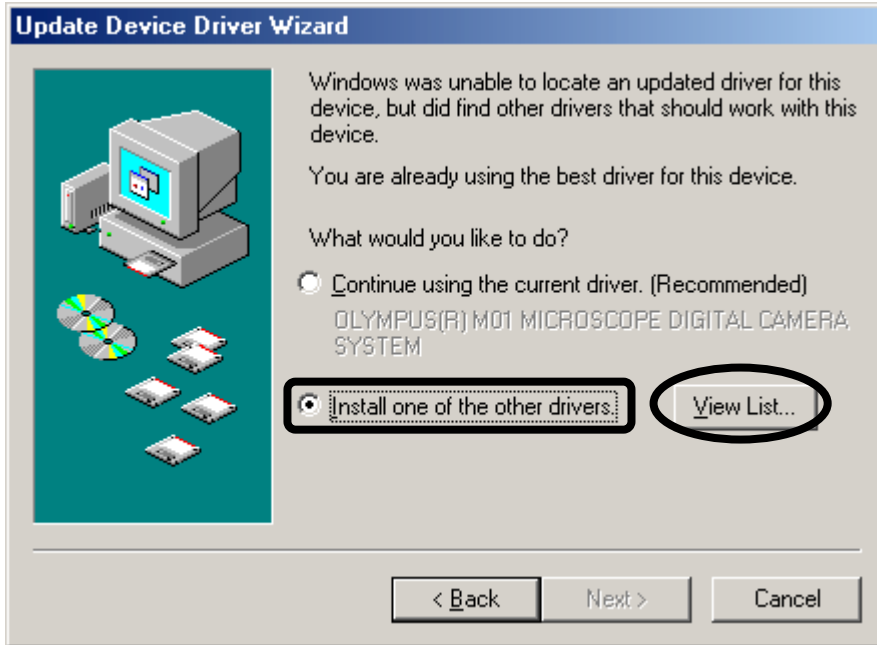


- When the [Update Device Driver Wizard] dialog box appears, select "Automatic search for a better driver" and click the <Next> button.

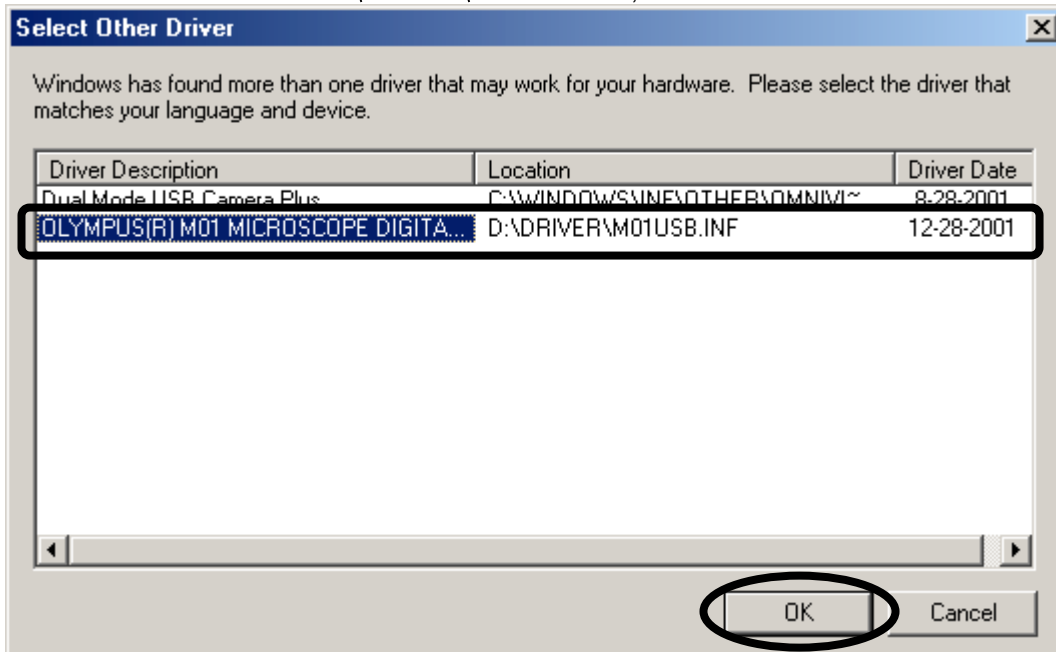


## Driver Installation/Updating Procedure

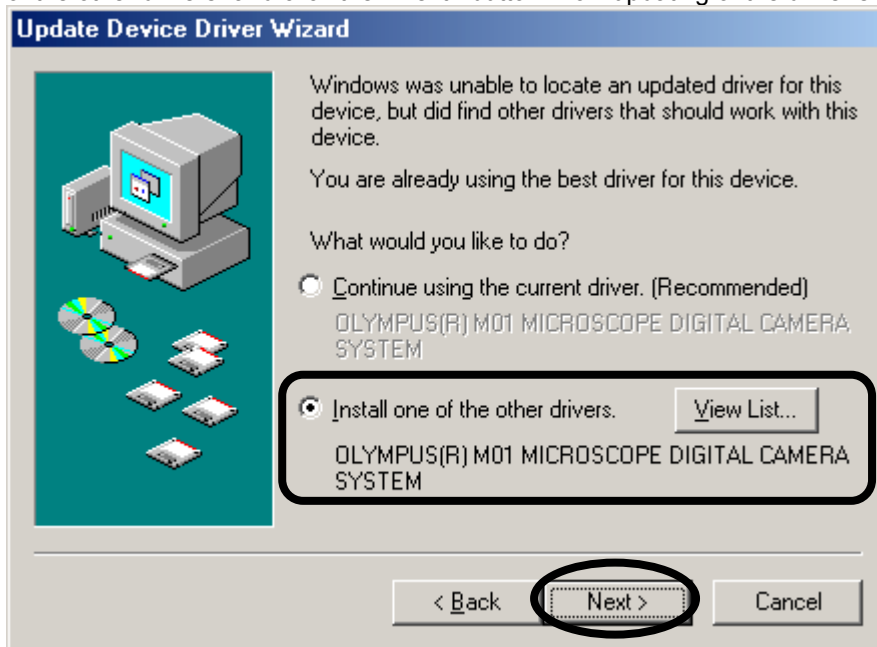
9. Select "Install one of the other drivers" and click the <View List> button.



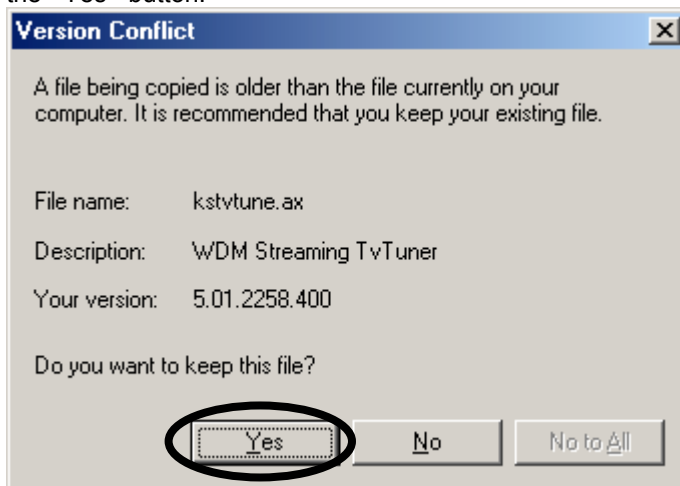
10. When the [Select Other Driver] dialog box appears, select "OLYMPUS(R) M01 MICROSCOPE DIGITAL CAMERA SYSTEM". If more than one driver with the same name exists, select the one ,the location of which is "CD-ROM drive name:\DRIVER\M01USB.INF", and click the <OK> button.



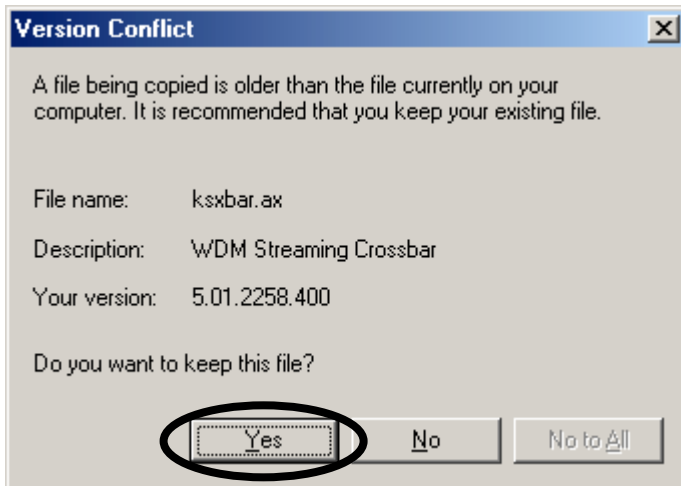
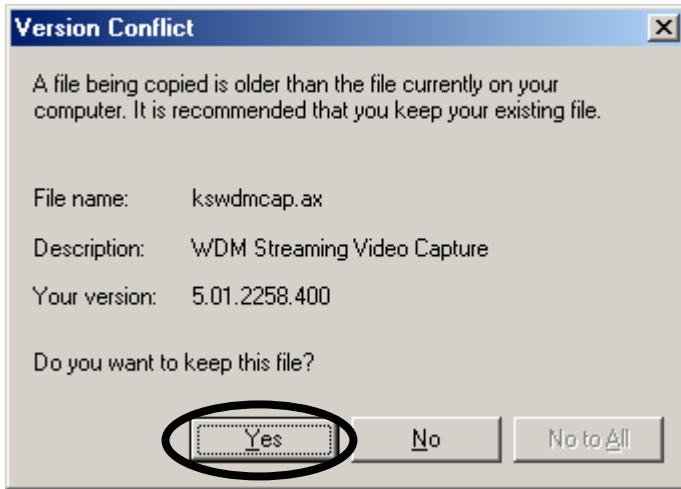
- Confirm that "OLYMPUS(R) M01 MICROSCOPE DIGITAL CAMERA SYSTEM" is shown below "Install one of the other drivers" and click the <Next> button. Now updating of the driver should start.



- The [Version Conflict] dialog boxes as shown below may sometimes appear. In each of these cases, click the <Yes> button.



## Driver Installation/Updating Procedure



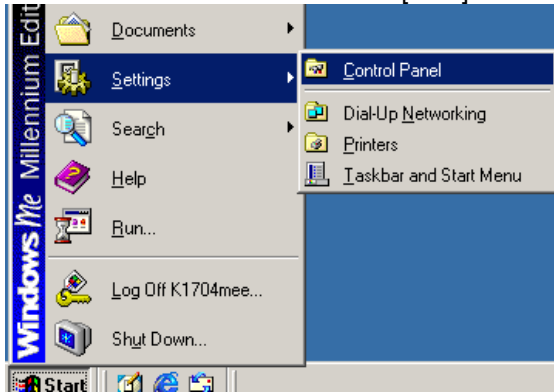
13. Click the <Finish> button. Now the driver updating is complete.



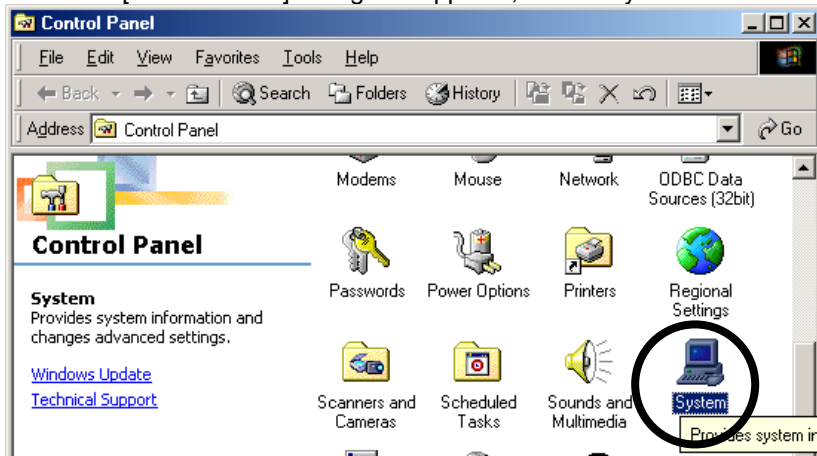
Next, check if the driver is updated properly.



14. Click the <Start> button. When the [Start] menu appears, select [Settings] – [Control Panel].

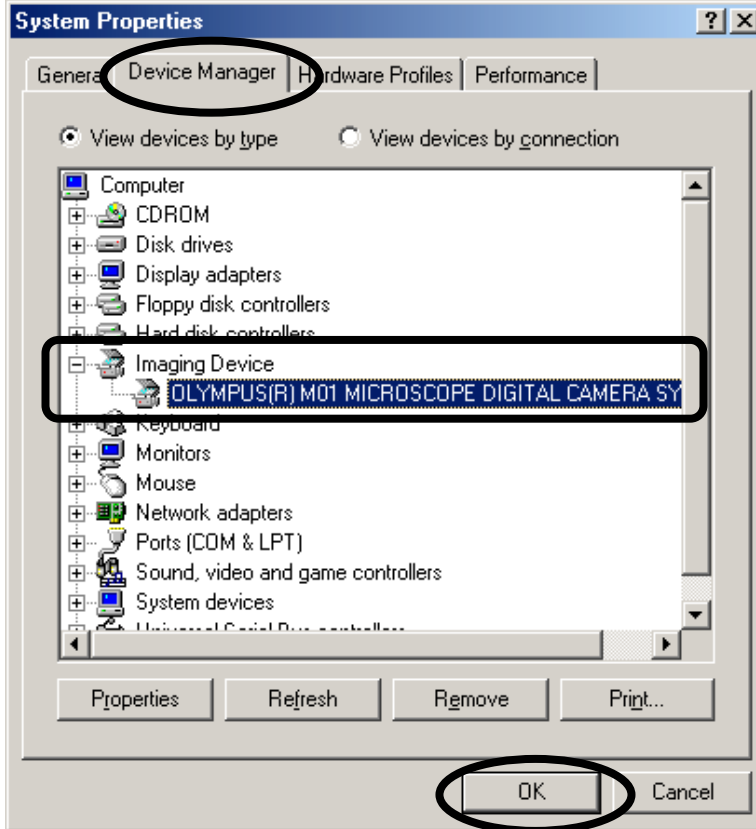


15. When the [Control Panel] dialog box appears, select “System”.



## Driver Installation/Updating Procedure

- When the [System Properties] dialog box appears, select the [Device Manager] tab. If the driver has been properly updated, "OLYMPUS(R) M01 MICROSCOPE DIGITAL CAMERA SYSTEM" should be displayed below "Imaging Device". After confirming this, click the <OK> button.



If marking such as "X", "?" or "!" is attached to the icon on the left of "OLYMPUS(R) M01 MICROSCOPE DIGITAL CAMERA SYSTEM", if a different name is displayed instead of "OLYMPUS(R) M01 MICROSCOPE DIGITAL CAMERA SYSTEM" or if "Imaging Device" is not displayed but "Unknown Device" or like is displayed below "Other Device", the driver is not updated properly. In this case, update the driver again (see page 7).

(Examples of display after inappropriate driver updating)

