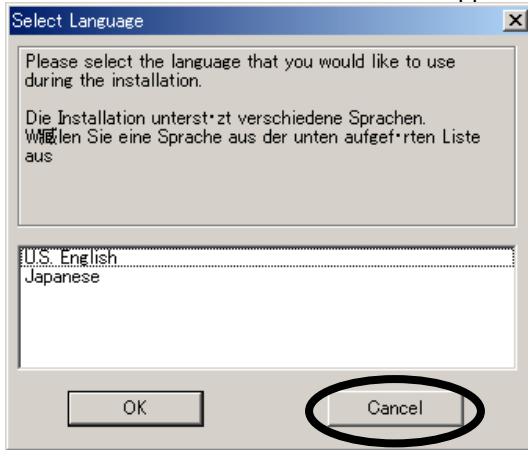
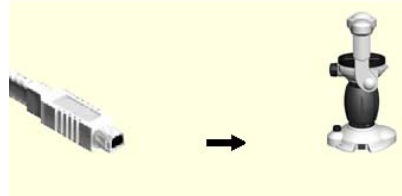
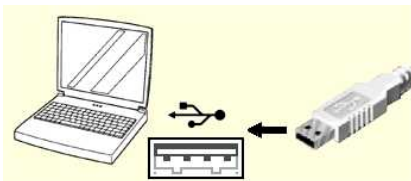


Driver Installation Procedure (Microsoft® Windows® 98 Second Edition)

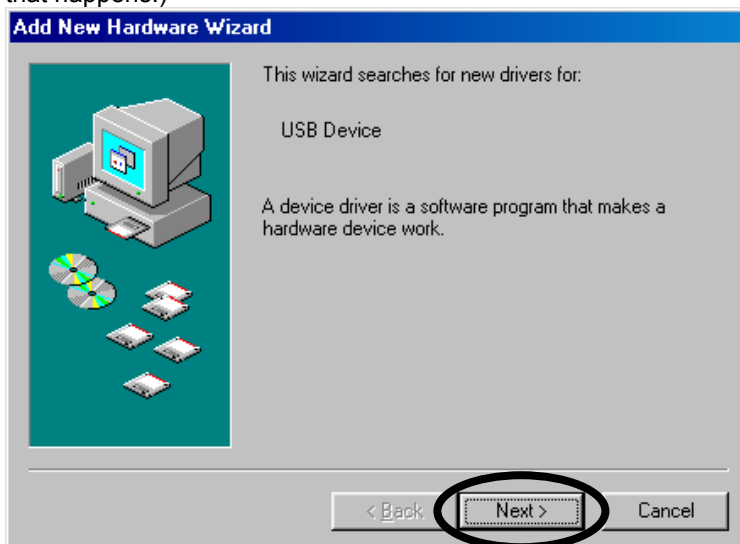
1. Inactivate applications.
2. Insert the CD-ROM of the software to the CD-ROM drive.
3. When the software installation window appears automatically, click the <Cancel> button to close it.



4. Connect this product to the PC using the provided USB cable.



5. When the USB cable is connected, the [Add New Hardware Wizard] dialog box appears automatically. Simply click the <Next> button. If this dialog box does not appear automatically, update the driver (see page 7). ("USB Device" in the figure below may sometimes be designated as "Unknown Device". Ignore it if that happens.)



Driver Installation/Updating Procedure



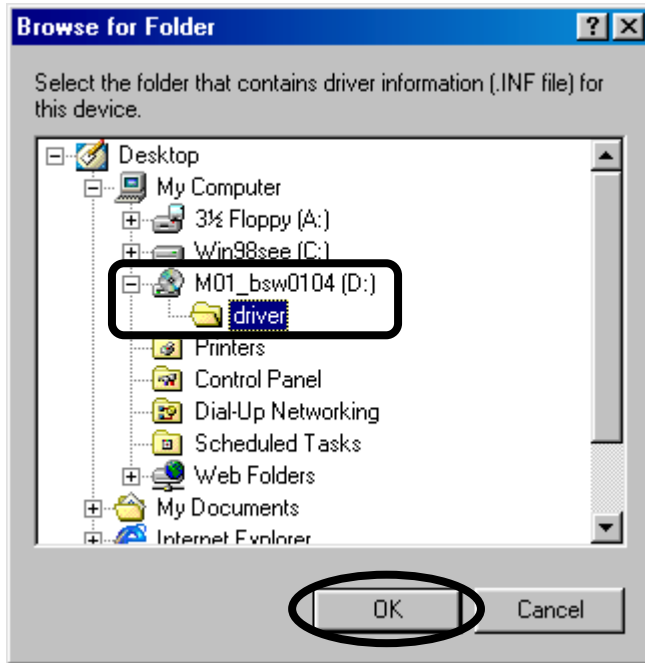
6. Select [Search for the best driver for your device] and click the <Next> button.



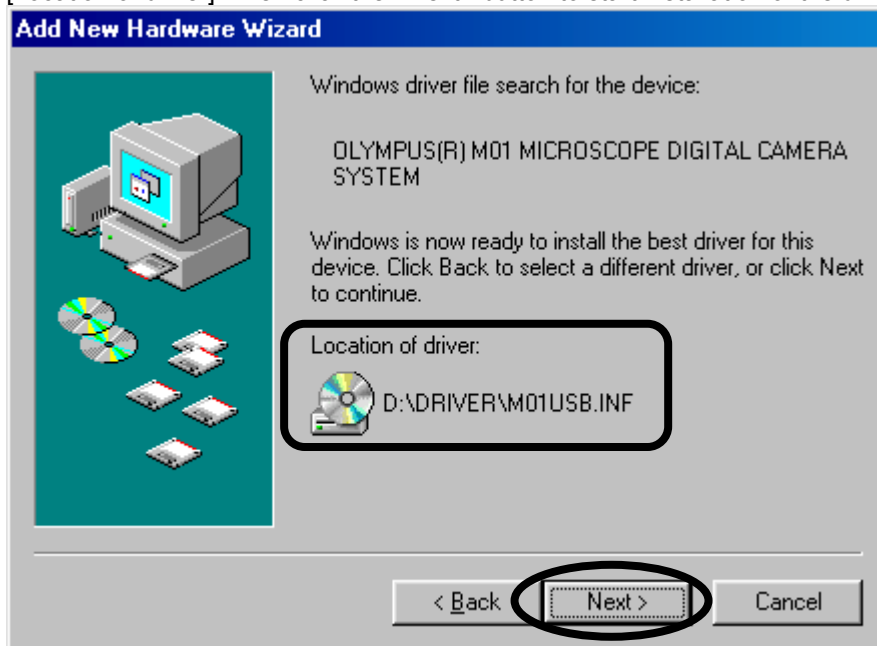
7. Check only the [Specify a location] check box and click the <Browse> button.



8. When the [Browse for Folder] dialog box appears, select the “CD-ROM drive name:\driver” folder and click the <OK> button.



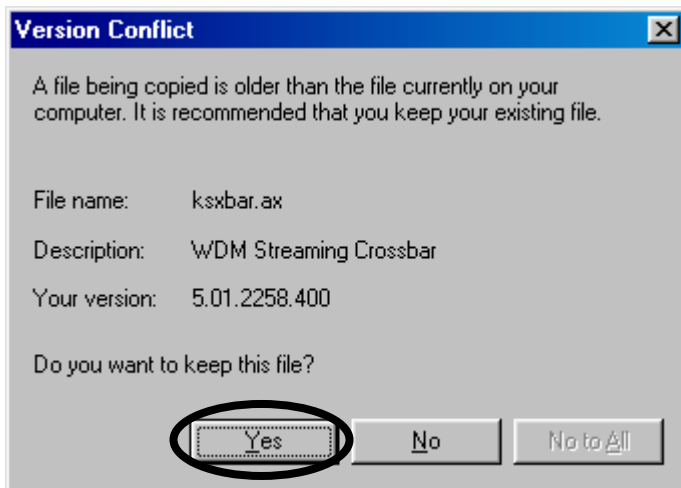
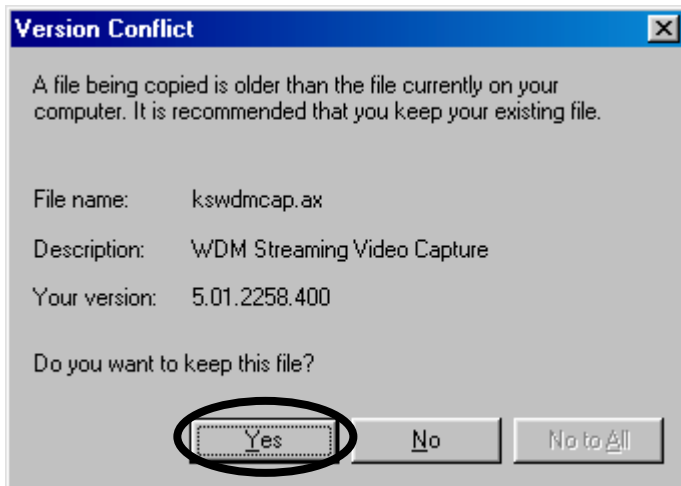
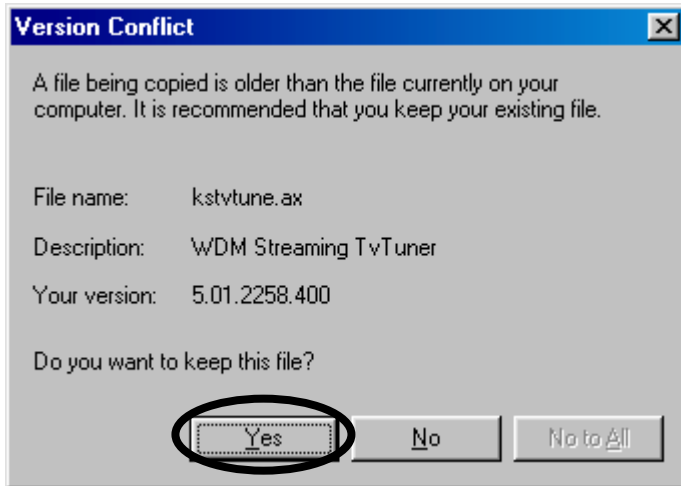
9. In the following dialog box, confirm that “CD-ROM drive name:\DRIVER\M01USB.INF” is shown under [Location of driver]. Then click the <Next> button to start installation of the driver.



Driver Installation/Updating Procedure



10. The [Version Conflict] dialog boxes as shown below may sometimes appear. In each of these cases, click the <Yes> button.

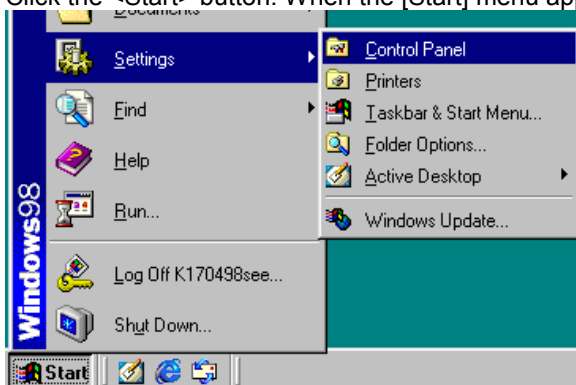


- Click the <Finish> button to complete the driver installation.

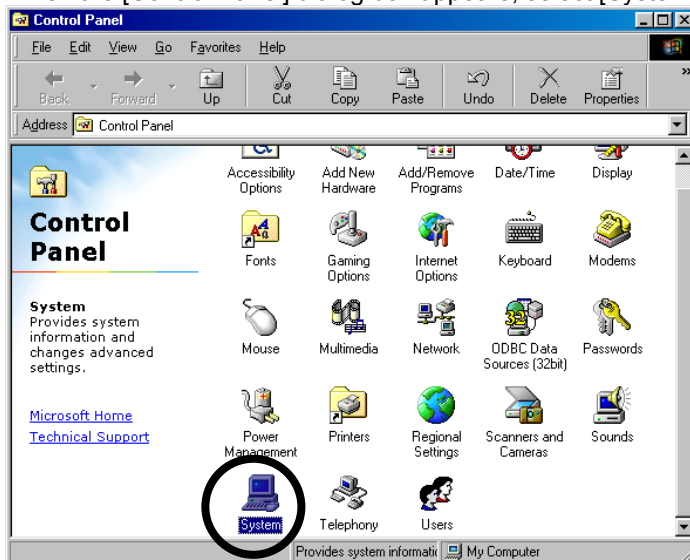


Next, check if the driver is installed properly.

- Click the <Start> button. When the [Start] menu appears, select [Settings] – [Control Panel].

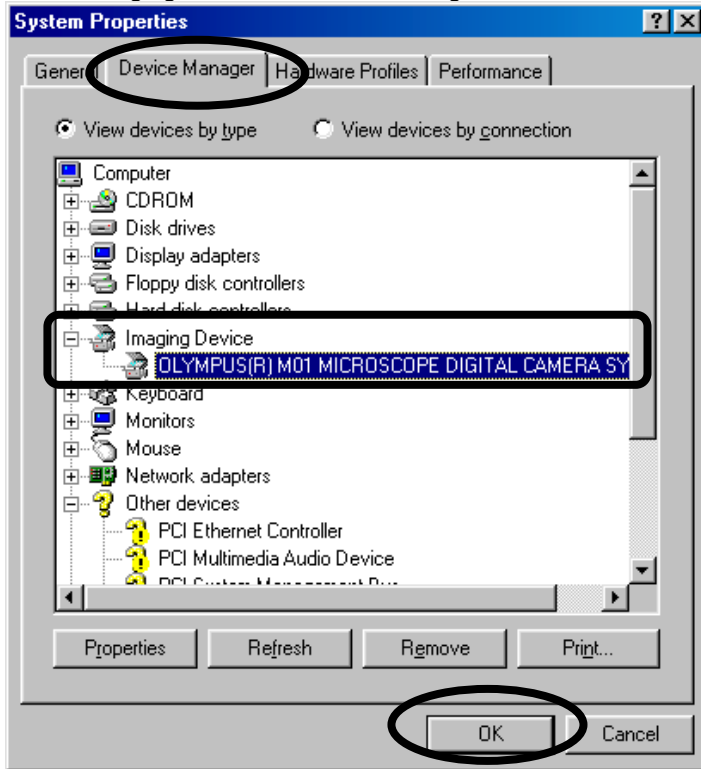


- When the [Control Panel] dialog box appears, select [System].



Driver Installation/Updating Procedure

14. When the [System Properties] dialog box appears, select the [Device Manager] tab. If the driver has been properly installed, "OLYMPUS(R) M01 MICROSCOPE DIGITAL CAMERA SYSTEM" should be displayed below "Imaging Device". After confirming this, click the <OK> button.



NOTE

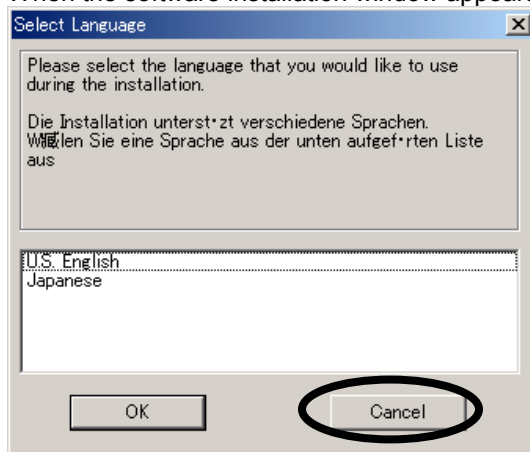
If marking such as "X", "?" or "!" is attached to the icon on the left of "OLYMPUS(R) M01 MICROSCOPE DIGITAL CAMERA SYSTEM", if a different name is displayed instead of "OLYMPUS(R) M01 MICROSCOPE DIGITAL CAMERA SYSTEM" or if "Imaging Device" is not displayed but "Unknown Device" or like is displayed below "Other Device", the driver is not installed properly. In this case, update the driver (see page 7).

(Examples of display after inappropriate driver installation)

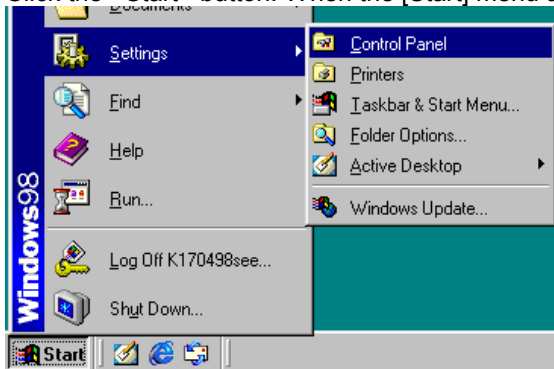


Driver Updating Procedure (Microsoft® Windows® 98 Second Edition)

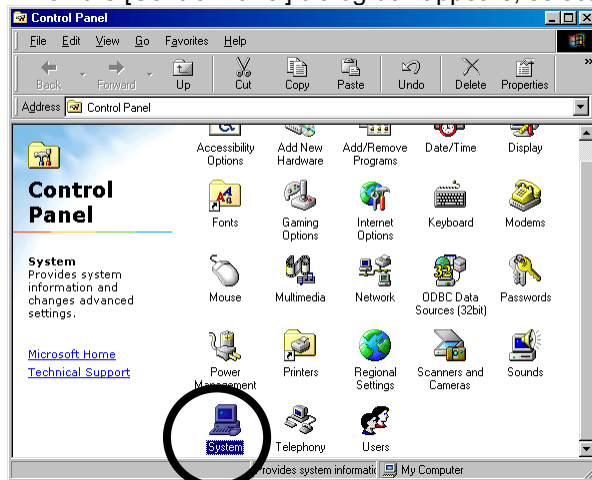
1. Connect the MIC-D to the PC.
2. Insert the CD-ROM of the software to the CD-ROM drive.
3. When the software installation window appears automatically, click the <Cancel> button to close it.



4. Click the <Start> button. When the [Start] menu appears, select [Settings] – [Control Panel].

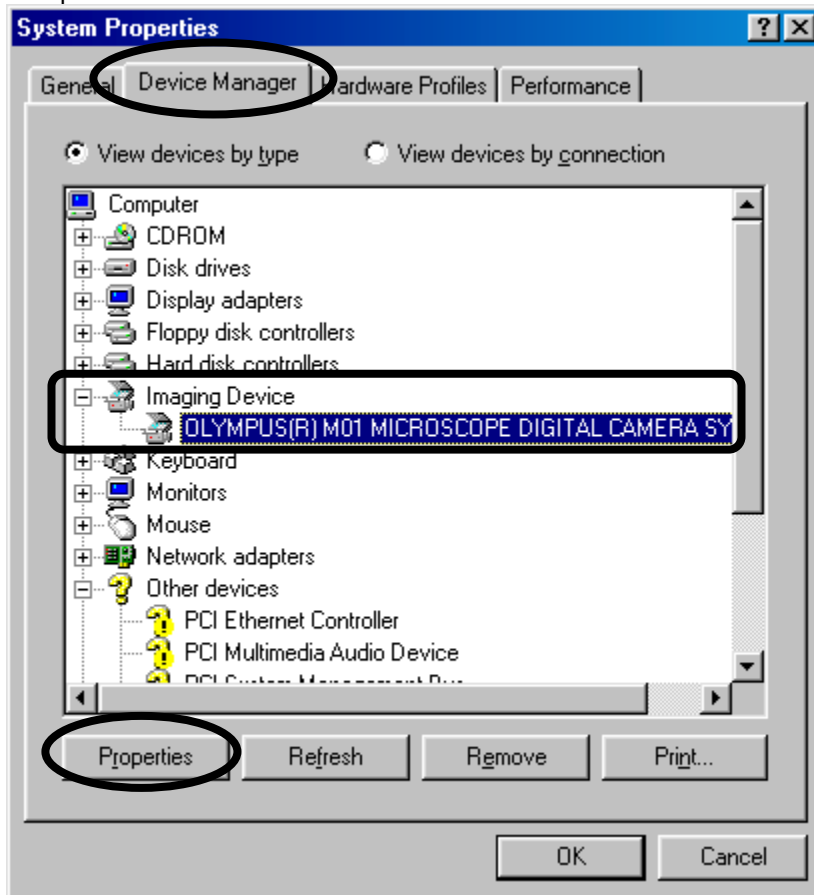


5. When the [Control Panel] dialog box appears, select [System].



Driver Installation/Updating Procedure

- When the [System Properties] dialog box appears, select the [Device Manager] tab. Select "OLYMPUS(R) M01 MICROSCOPE DIGITAL CAMERA SYSTEM" below "Imaging Device" and click the <Properties> button.



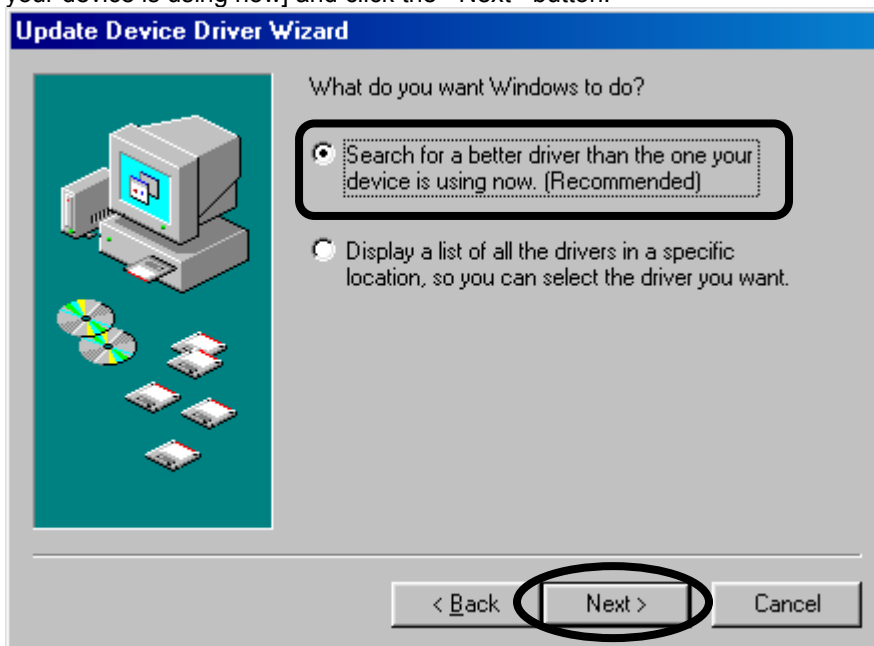
If "OLYMPUS(R) M01 MICROSCOPE DIGITAL CAMERA SYSTEM" or "Imaging Device" is not displayed, select "USB Device" below "Imaging Device" or select "Unknown Device" or "USB Device" below "Other Device", and click the <Properties> button.



- When a dialog box appears, click the [Driver] tab and click the <Update Driver> button.

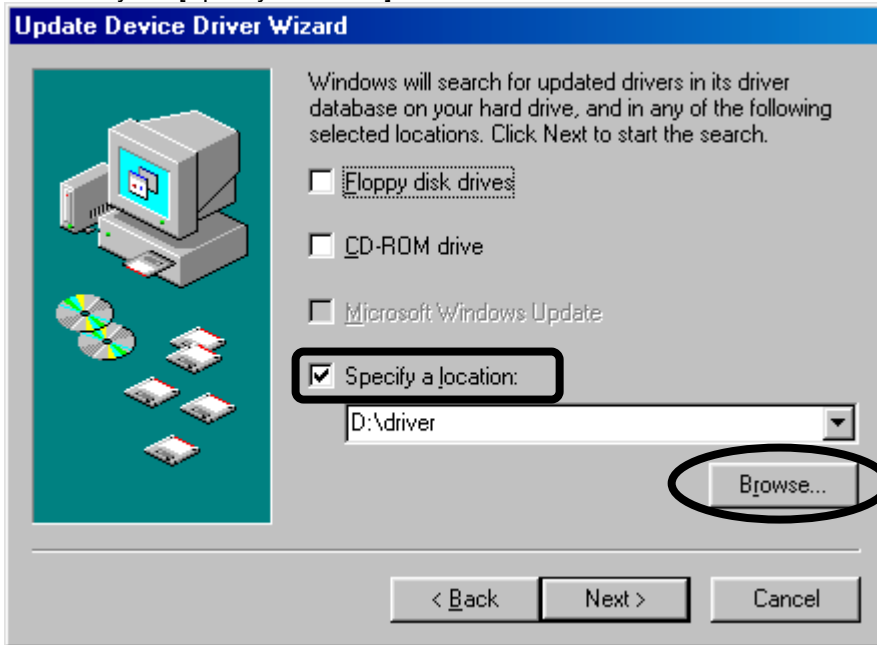


- When the [Update Device Driver Wizard] dialog box appears, select [Search for a better driver than the one your device is using now] and click the <Next> button.

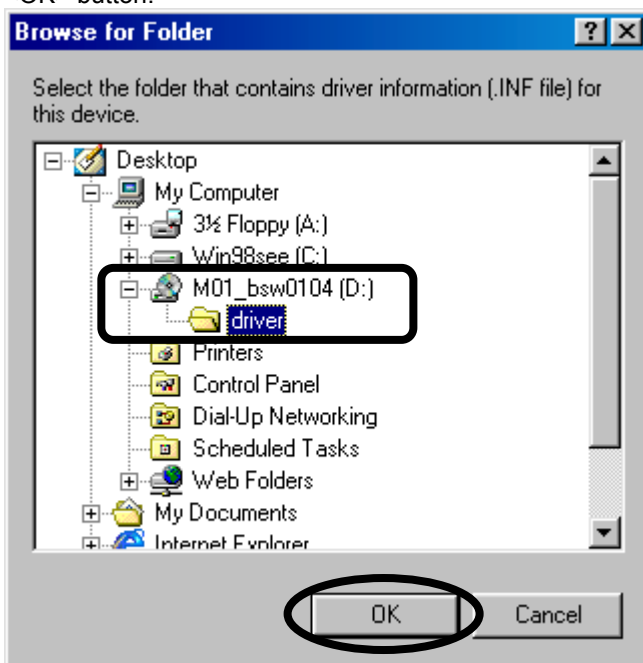


Driver Installation/Updating Procedure

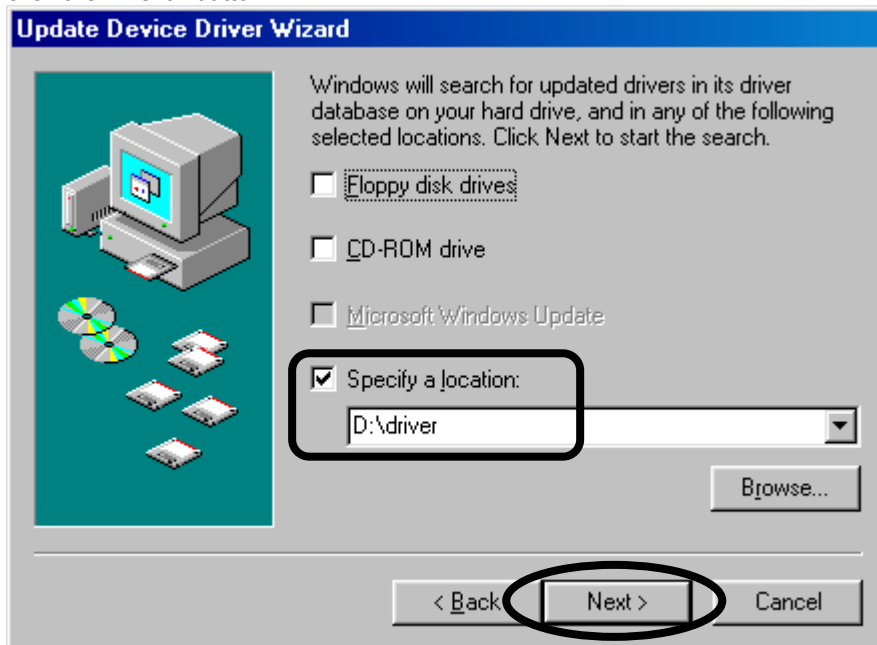
9. Check only the [Specify a location] check box and click the <Browse> button.



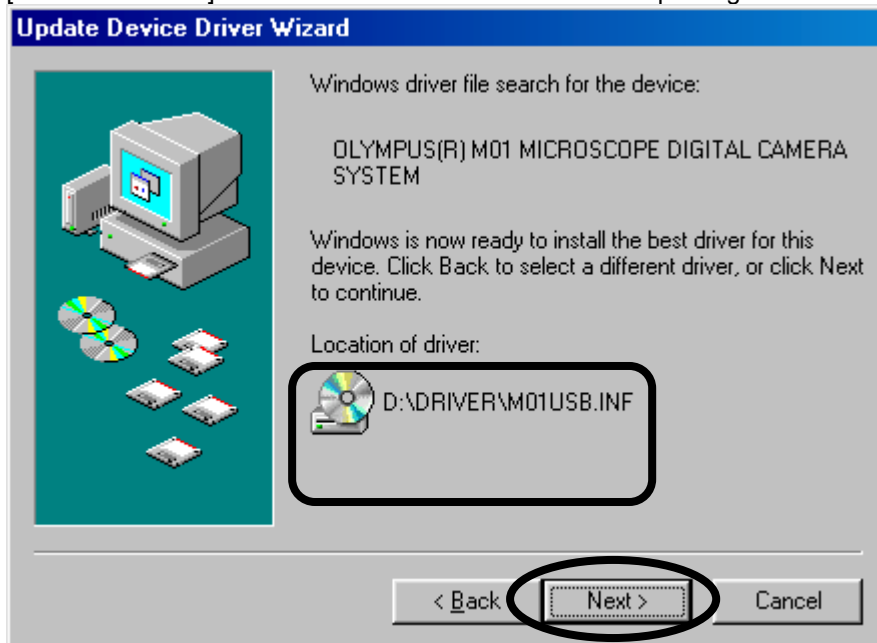
10. When the [Browse for Folder] dialog box appears, select the "CD-ROM drive name:\driver" folder and click the <OK> button.



11. In the following dialog box, confirm that “CD-ROM drive:\driver” is shown under [Specify a location] and click the <Next> button.

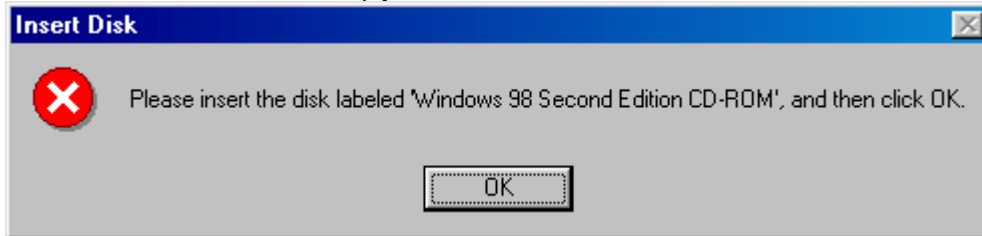


12. In the following dialog box, confirm that “CD-ROM drive name:\DRIVER\M01USB.INF” is displayed under [Location of driver]. Then click the <Next> button to start updating of the driver.

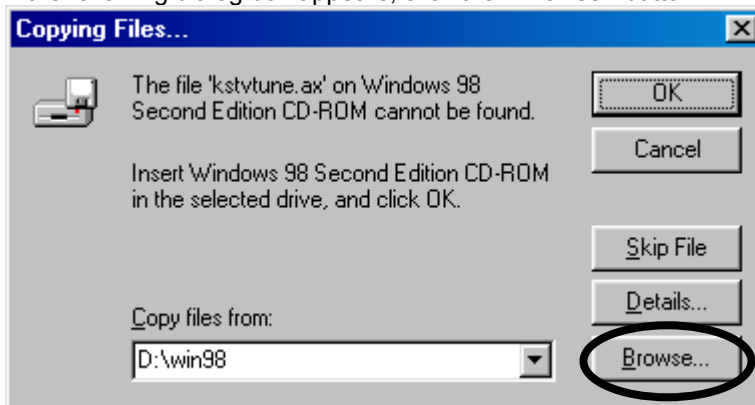


Driver Installation/Updating Procedure

13. The following dialog box may appear during the driver updating. Follow the instructions in the dialog box and click the <OK> button to continue updating. If the disc carrying the “Windows 98 Second Edition CD-ROM” label is not available, simply click the <OK> button.

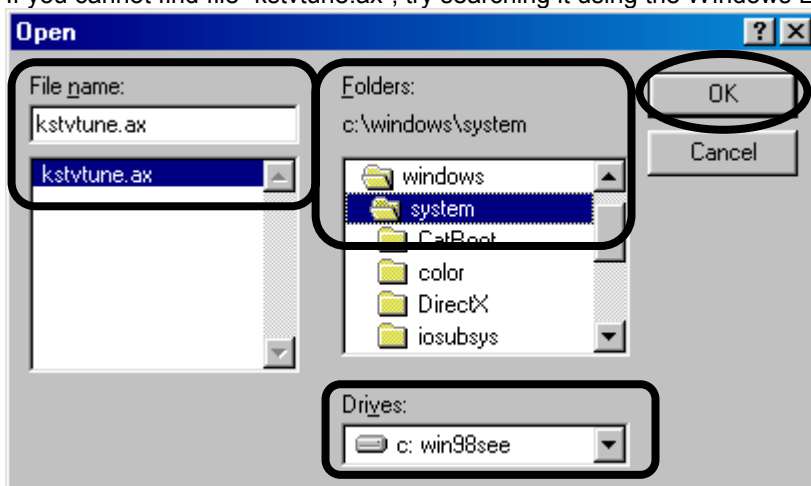


If the following dialog box appears, click the <Browse> button.

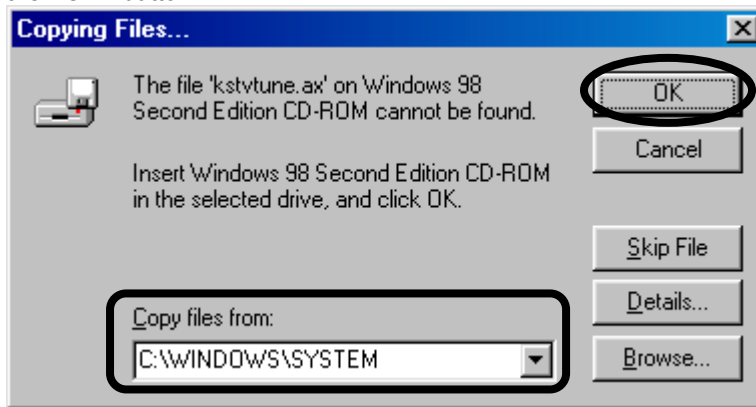


When the following dialog box appears, select the local hard disk drive as [Drives] → folder “windows\system” as [Folders] → file “kstvtune.ax” as [File Name], and click the <OK> button.

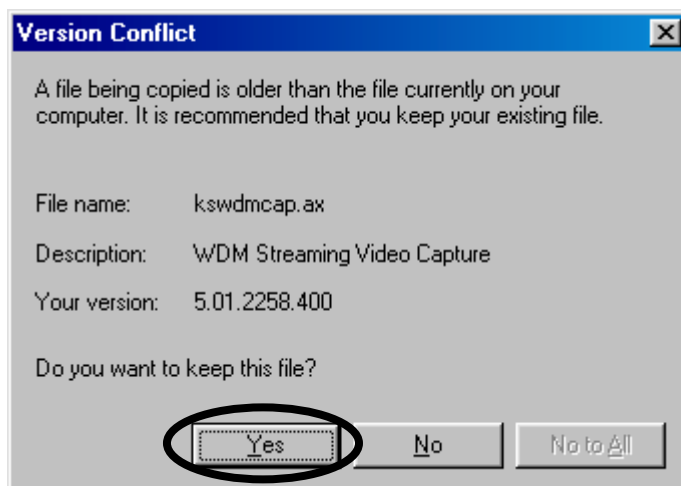
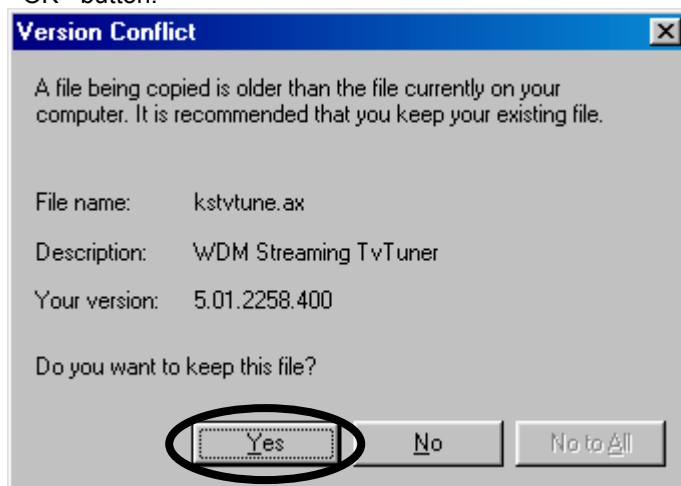
If you cannot find file “kstvtune.ax”, try searching it using the Windows Explorer.



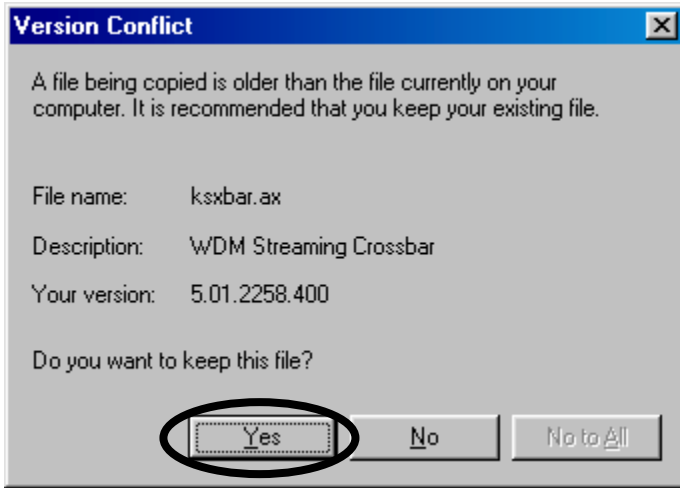
Confirm that location “CD-ROM drive:\WINDOWS\SYSTEM” is selected under [Copy files from] and click the <OK> button.



14. The [Version Conflict] dialog boxes as shown below may sometimes appear. In each of these cases, click the <OK> button.



Driver Installation/Updating Procedure

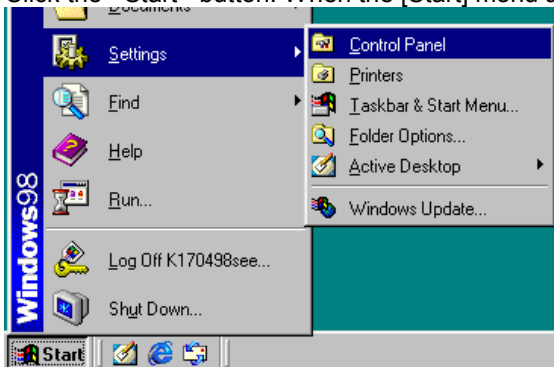


- 15. Click the <Finish> button to complete the driver updating.



Next, check if the driver is updated properly.

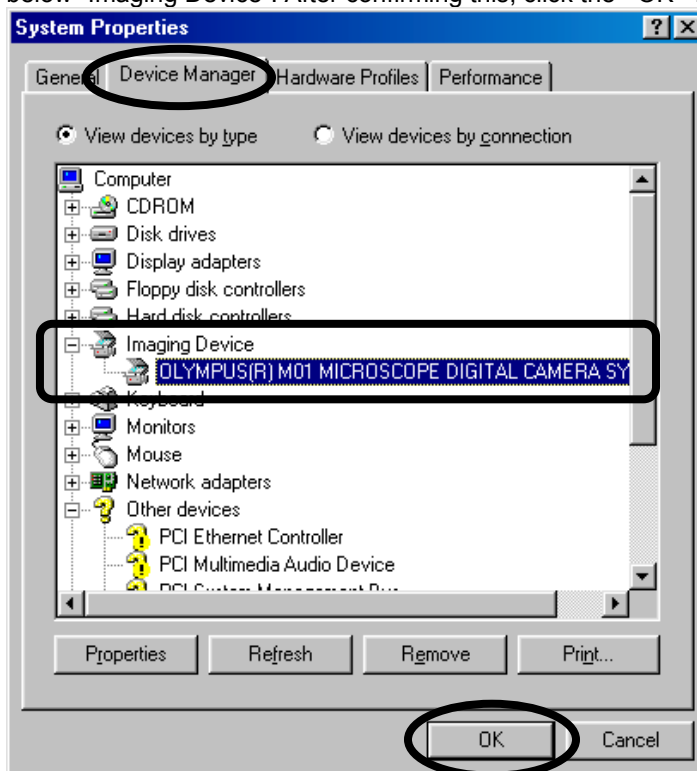
- 16. Click the <Start> button. When the [Start] menu appears, select [Settings] – [Control Panel].



17. When the [Control Panel] dialog box appears, select [System].



18. When the [System Properties] dialog box appears, select the [Device Manager] tab. If the driver has been properly updated, "OLYMPUS(R) M01 MICROSCOPE DIGITAL CAMERA SYSTEM" should be displayed below "Imaging Device". After confirming this, click the <OK> button.





If marking such as “X”, “?” or “!” is attached to the icon on the left of “OLYMPUS(R) M01 MICROSCOPE DIGITAL CAMERA SYSTEM”, a different name is displayed instead of “OLYMPUS(R) M01 MICROSCOPE DIGITAL CAMERA SYSTEM” or if “Imaging Device” is not displayed but “Unknown Device” or like is displayed below “Other Device”, the driver is not updated properly. In this case, update the driver again (see page 7).

(Examples of display after inappropriate driver updating)

