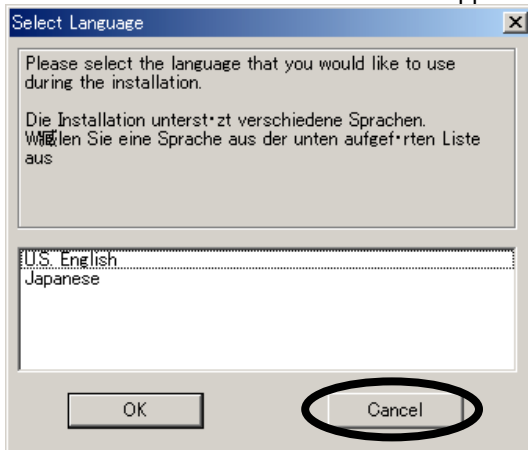
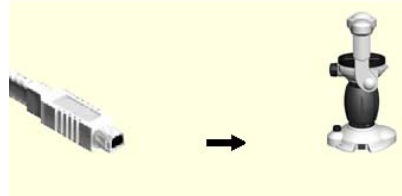
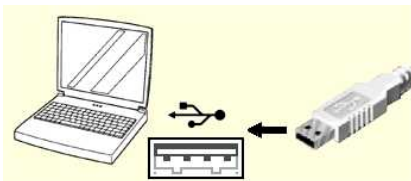


Driver Installation Procedure (Microsoft® Windows® 2000)

1. Inactivate all applications.
2. Insert the CD-ROM of the software to the CD-ROM drive.
3. When the software installation window appears automatically, click the <Cancel> button to close it.



4. Connect the product to the PC with the provided USB cable.



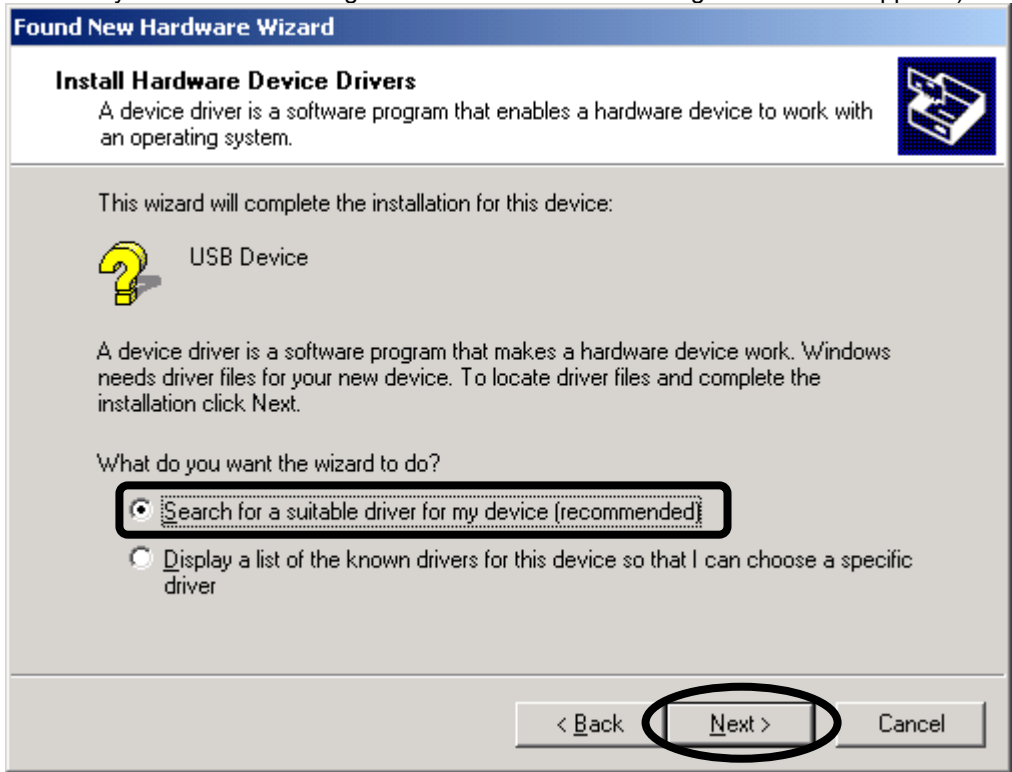
5. When the USB cable is connected, the [Find New Hardware Wizard] dialog box appears automatically. Simply click the <Next> button. If this dialog box does not appear automatically, update the driver (see page 8).



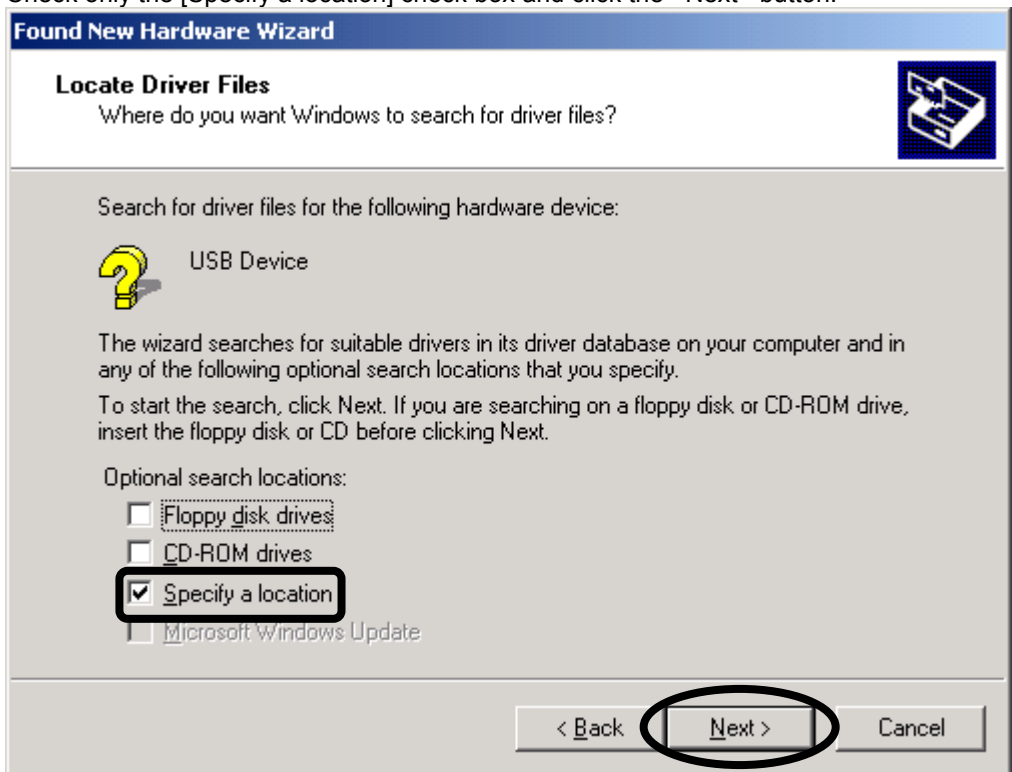
Driver Installation/Updating Procedure



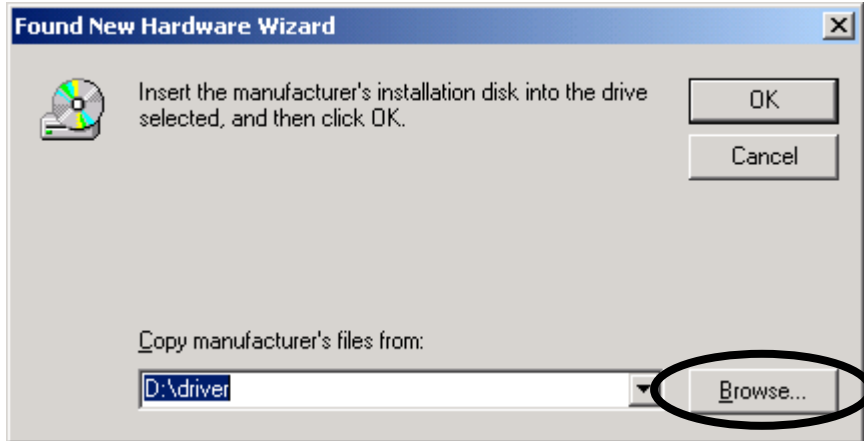
6. Select “Search for a suitable driver for my device” and click the <Next> button. (“USB Device” in the figure below may sometimes be designated as “Unknown Device”. Ignore it if that happens.)



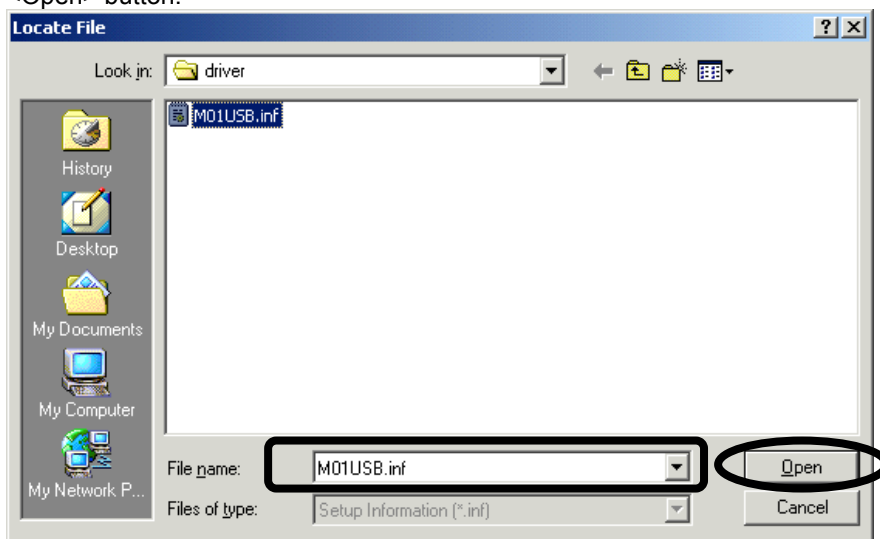
7. Check only the [Specify a location] check box and click the <Next> button.



- Click the <Browse> button.



- When the [Locate File] dialog box appears, select "CD-ROM drive name:\driver\M01USB.inf" and click the <Open> button.



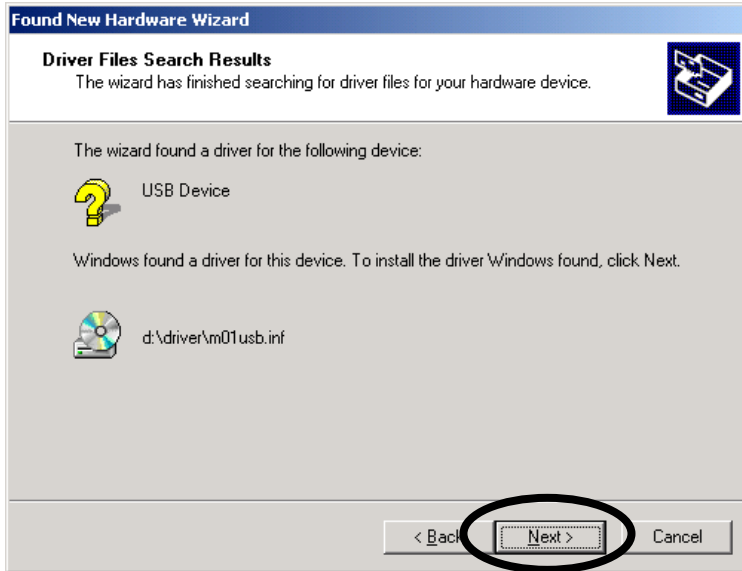
- Confirm that "CD-ROM drive name:\driver" is shown under "Copy manufacturer's files from" and click the <OK> button.



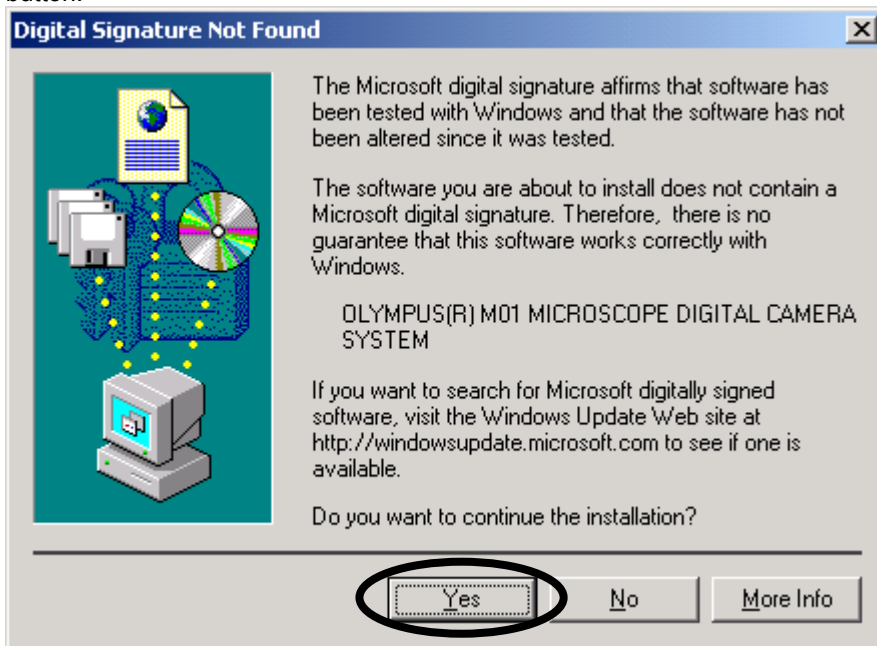
Driver Installation/Updating Procedure



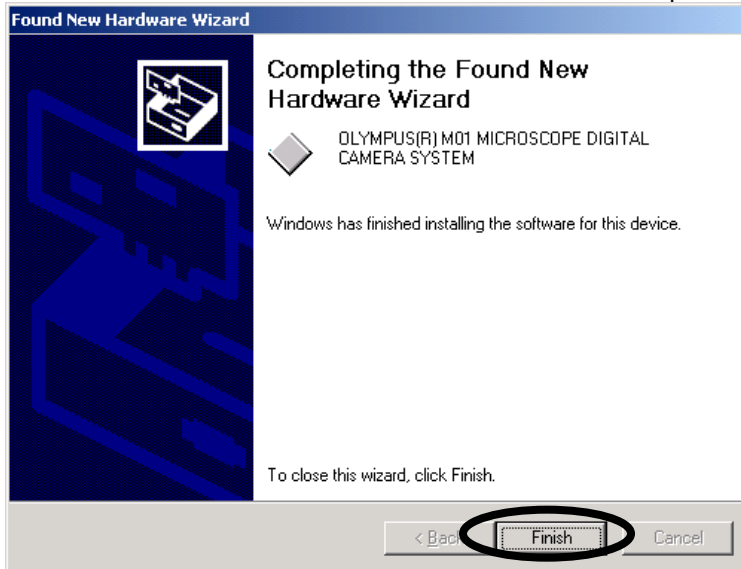
11. Click the <Next> button. Installation of the driver starts.



12. Then, the following dialog box appears. As this information will not hinder operation, simply click the <Yes> button.

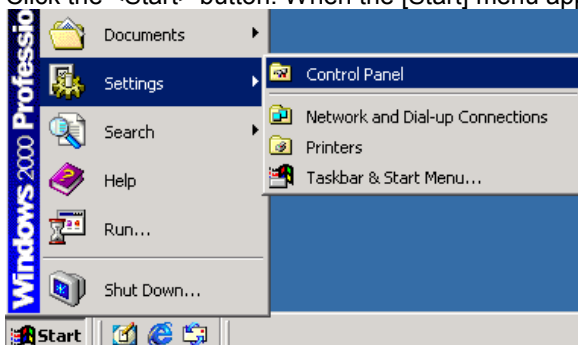


- Click the <Finish> button. Now the driver installation is complete.

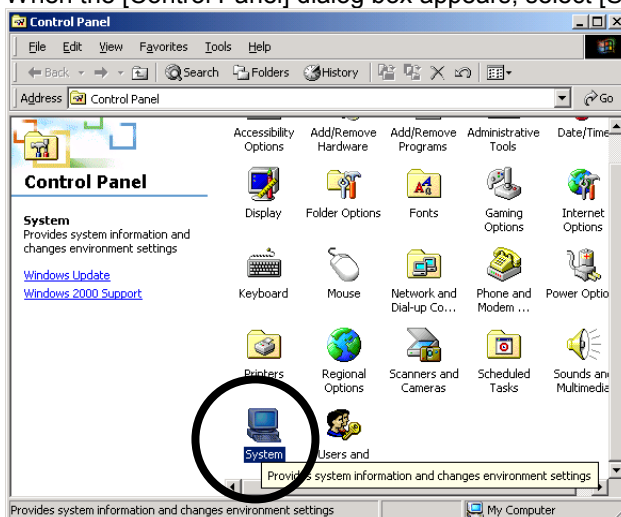


Next, check if the driver is installed properly.

- Click the <Start> button. When the [Start] menu appears, select [Settings] – [Control Panel].



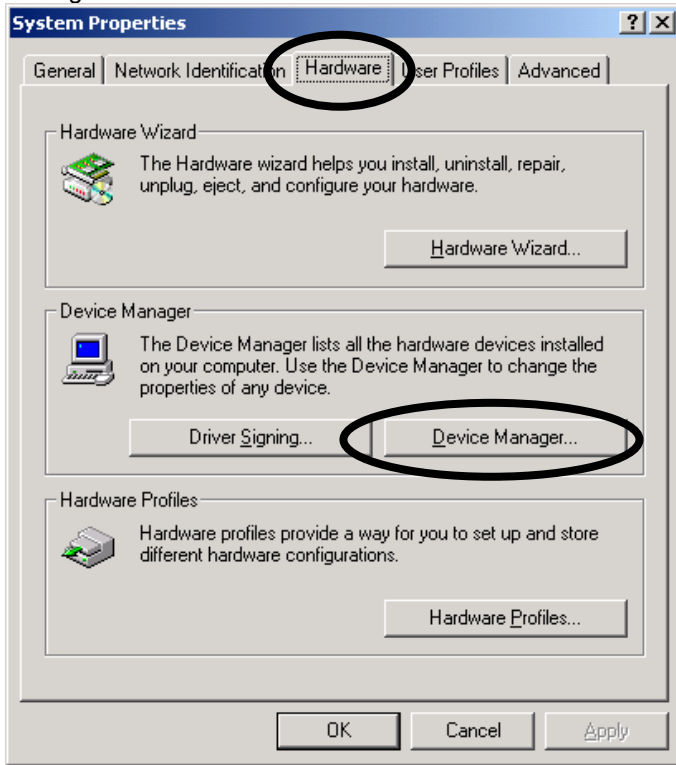
- When the [Control Panel] dialog box appears, select [System].



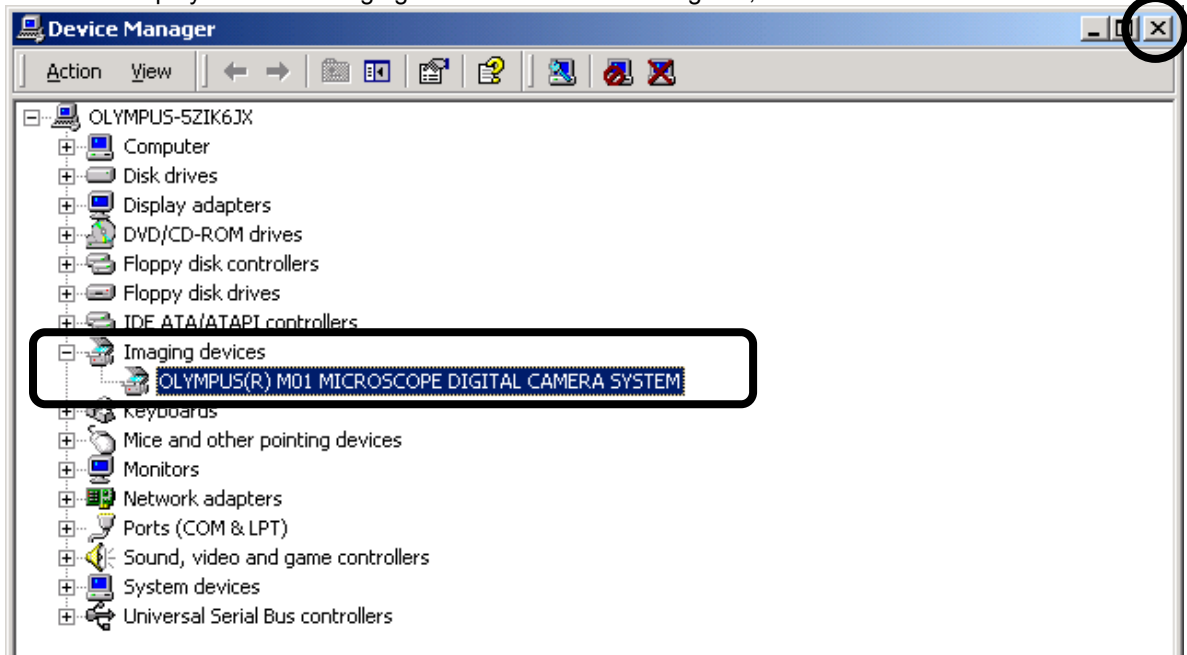
Driver Installation/Updating Procedure



16. When the [System Properties] dialog box appears, select the [Hardware] tab and click the <Device Manager> button.



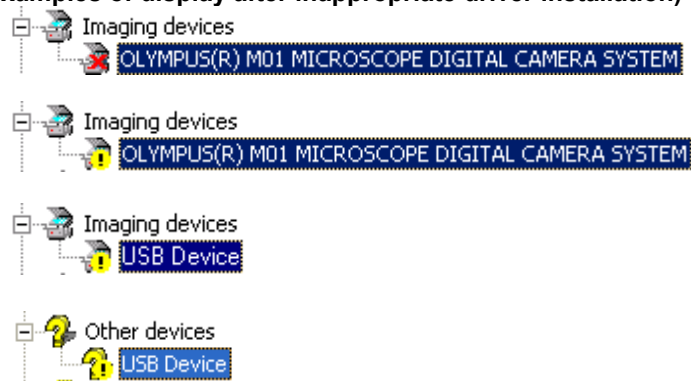
17. If the driver has been properly installed, "OLYMPUS(R) M01 MICROSCOPE DIGITAL CAMERA SYSTEM" should be displayed below "Imaging devices". After confirming this, click the <X> button.





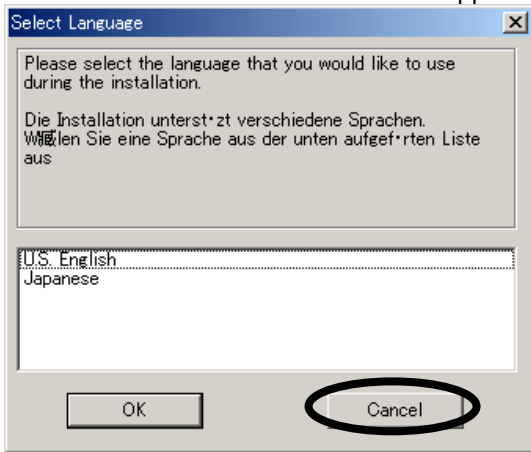
If marking such as “X”, “?” or “!” is attached to the icon on the left of “OLYMPUS(R) M01 MICROSCOPE DIGITAL CAMERA SYSTEM”, if a different name is displayed instead of “OLYMPUS(R) M01 MICROSCOPE DIGITAL CAMERA SYSTEM” or if “Imaging devices” is not displayed but “Unknown Device” or like is displayed below “Other devices”, the driver is not installed properly. In this case, update the driver (see page 8).

(Examples of display after inappropriate driver installation)

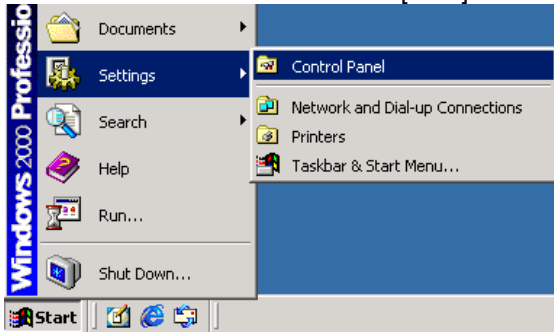


Driver Updating Procedure (Microsoft® Windows® 2000)

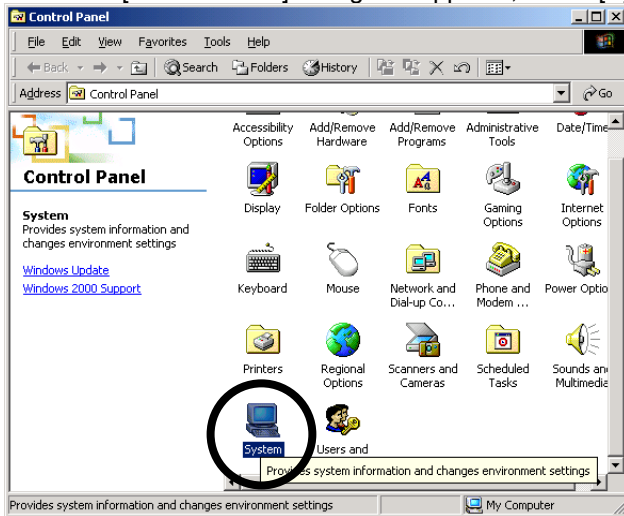
1. Connect the MIC-D to the PC.
2. Insert the CD-ROM of the software to the CD-ROM drive.
3. When the software installation window appears automatically, click the <Cancel> button to close it.



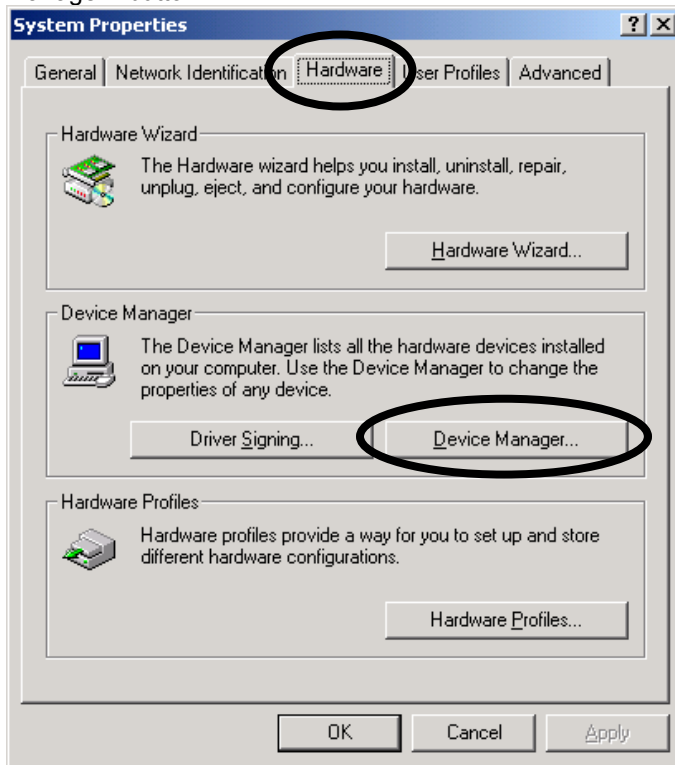
4. Click the <Start> button. When the [Start] menu appears, select [Settings] – [Control Panel].



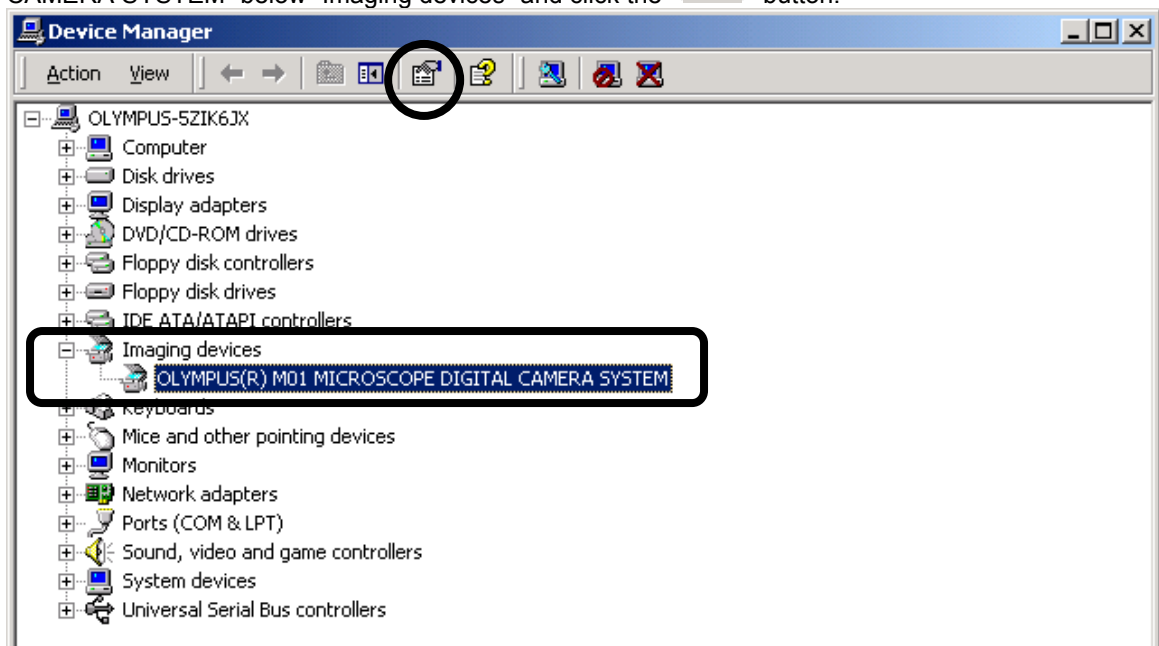
5. When the [Control Panel] dialog box appears, select [System].




- When the [System Properties] dialog box appears, select the [Hardware] tab and click the <Device Manager> button.

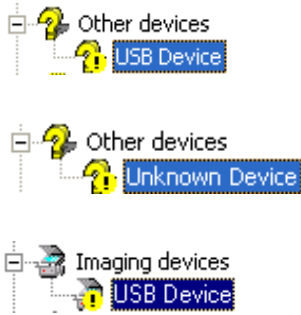


- When the [Device Manager] dialog box appears, select "OLYMPUS(R) M01 MICROSCOPE DIGITAL CAMERA SYSTEM" below "Imaging devices" and click the < > button.

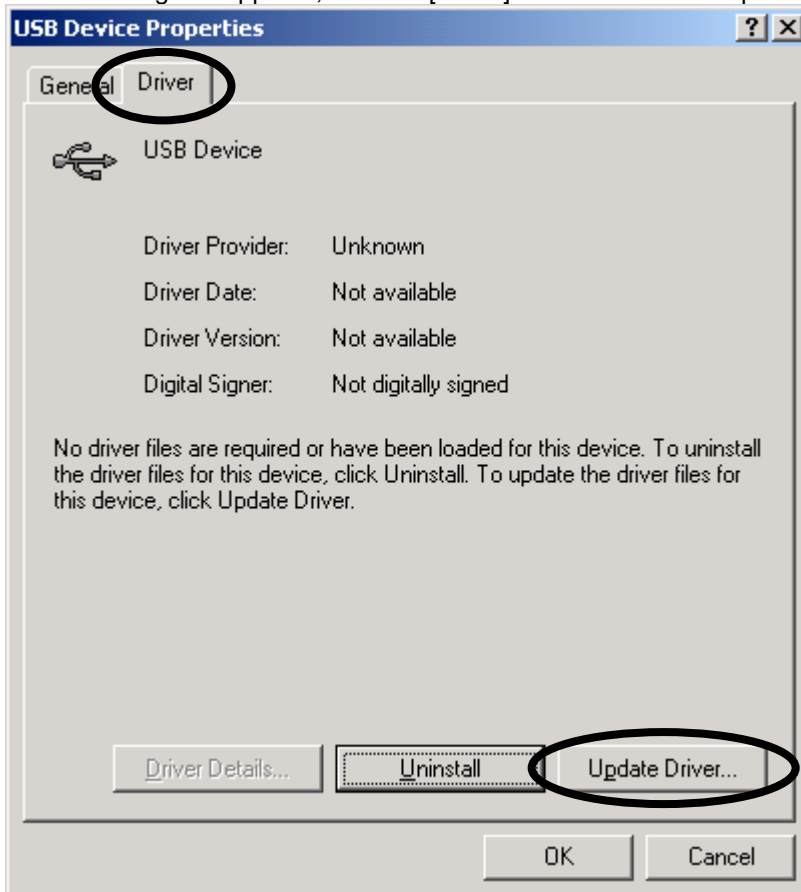


Driver Installation/Updating Procedure

If "OLYMPUS(R) M01 MICROSCOPE DIGITAL CAMERA SYSTEM" or "Imaging devices" is not displayed, select "USB Device" below "Imaging devices" or select "Unknown Device" or "USB Device" below "Other devices", and click the  button.



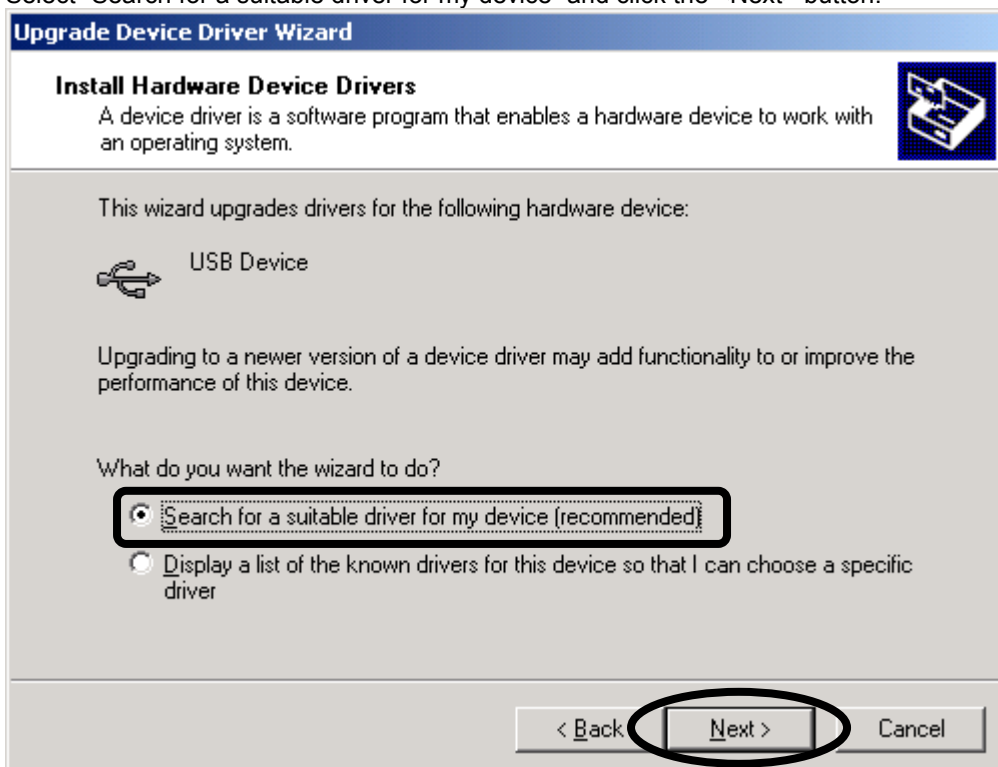
8. When a dialog box appears, click the [Driver] tab and click the <Update Driver> button.



9. When the [Update Device Driver Wizard] dialog box appears, click the <Next> button.



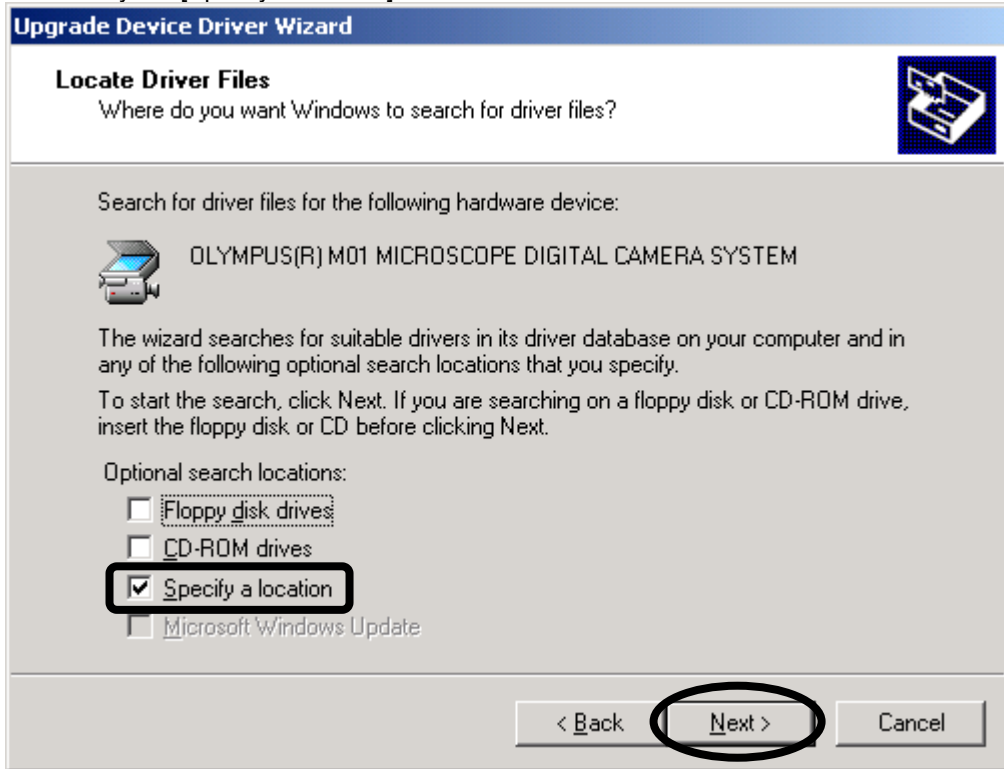
10. Select "Search for a suitable driver for my device" and click the <Next> button.



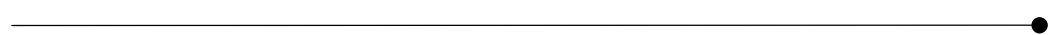
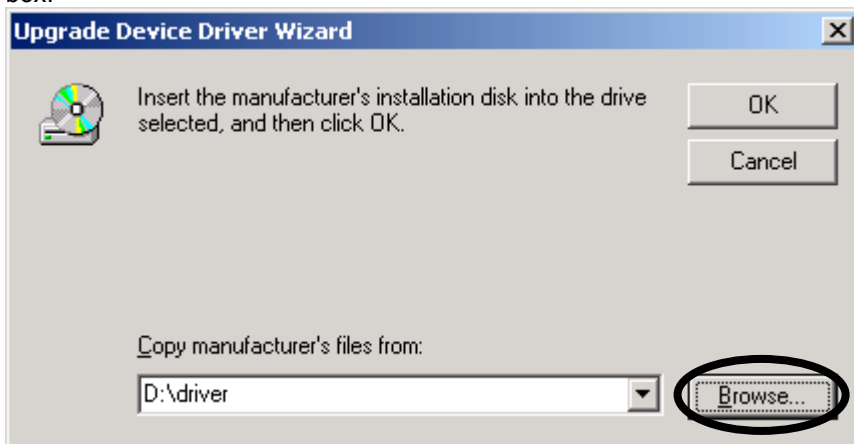
Driver Installation/Updating Procedure



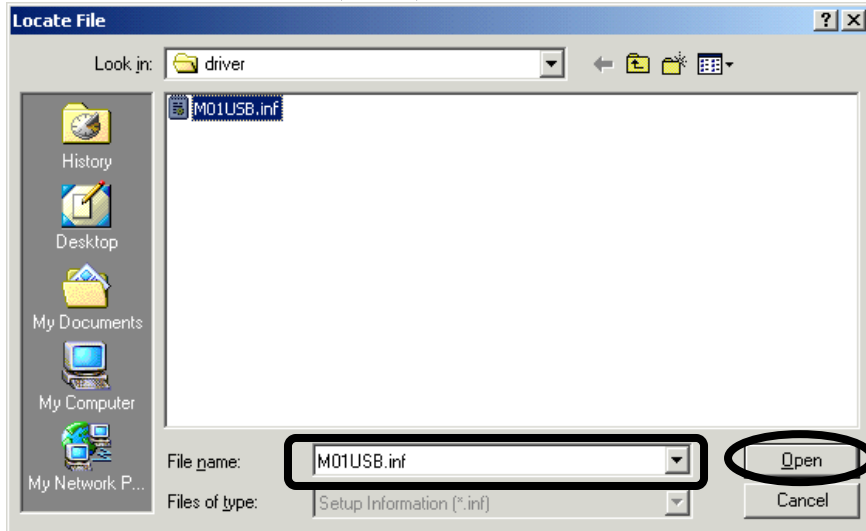
- 11. Check only the [Specify a location] check box and click the <Next> button.



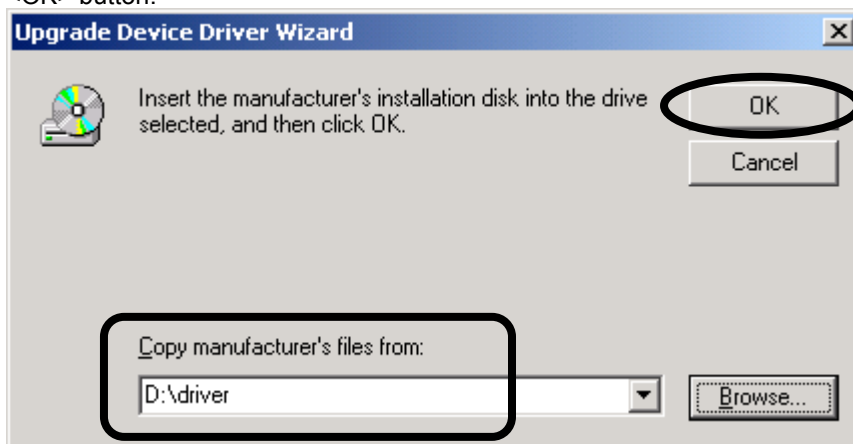
- 12. When a dialog box as shown below appears, click the <Browse> button to display the [Locate File] dialog box.



Select "CD-ROM drive name:\driver\M01USB.inf" as file location and click the <Open> button.

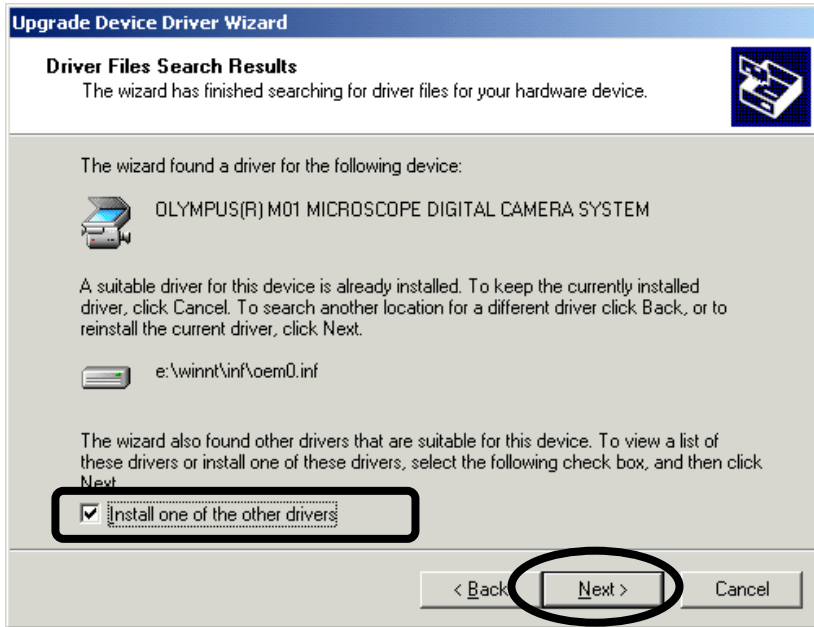


13. Confirm that "CD-ROM drive name:\driver" is shown under "Copy manufacturer's files from" and click the <OK> button.

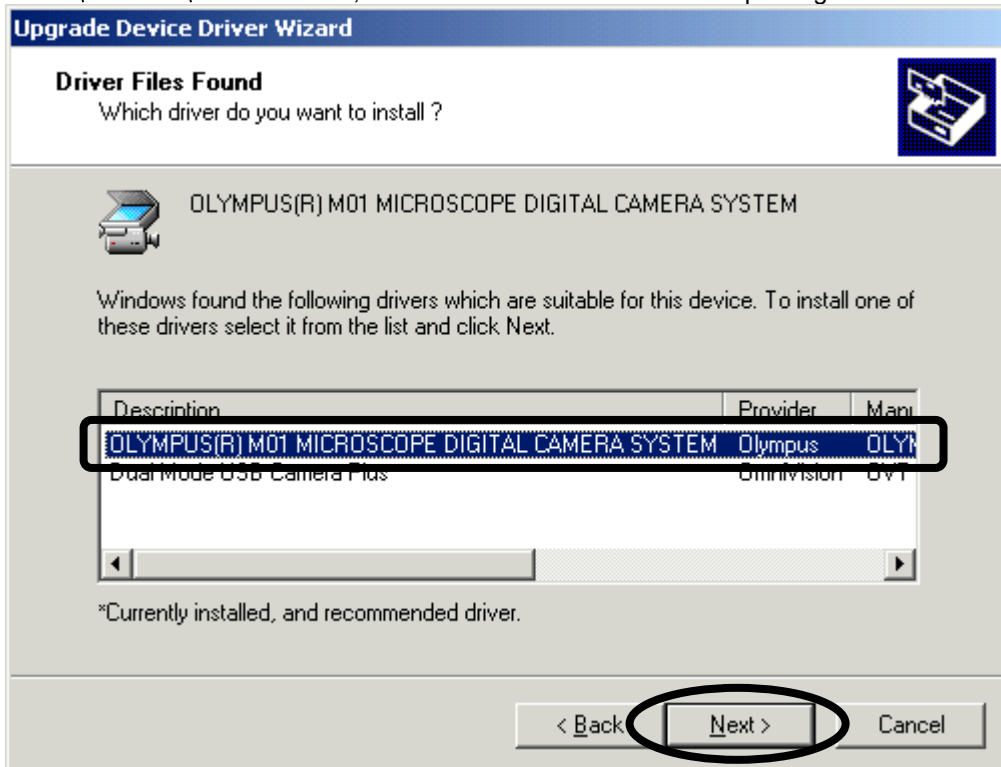


Driver Installation/Updating Procedure

14. If the searched driver is not the one specified in step 12, check the “Install one of the other drivers” check box and click the <Next> button.



15. Only in case the “Install one of the other drivers” check box is checked in step 14, the following dialog box appears. Select “OLYMPUS(R) M01 MICROSCOPE DIGITAL CAMERA SYSTEM”. If more than one driver with the same name exists, select the one the location of which is “CD-ROM drive name:\DRIVER\M01USB.INF”, and click the <OK> button. Now updating of the driver should start.

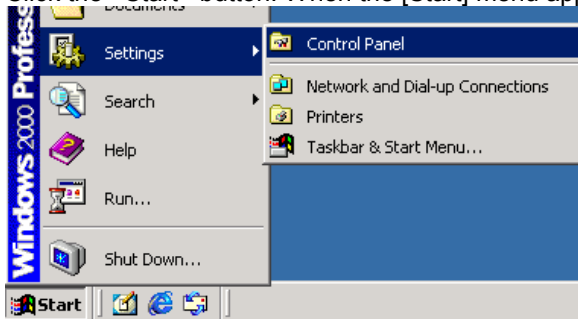


16. Click the <Finish> button. Now the driver updating is complete.

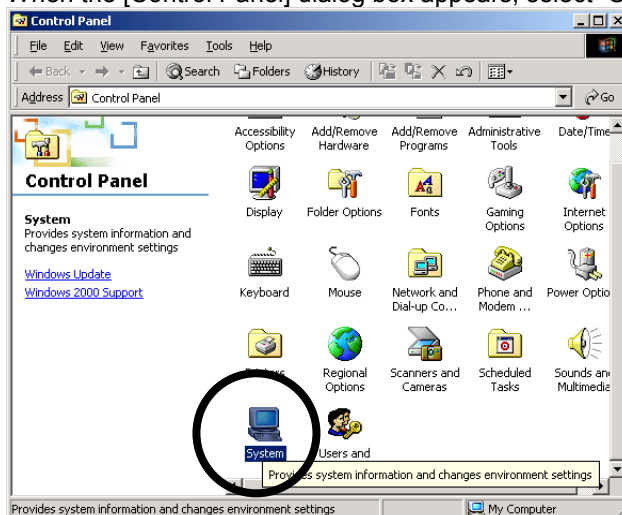


Next, check if the driver is updated properly.

17. Click the <Start> button. When the [Start] menu appears, select [Settings] – [Control Panel].



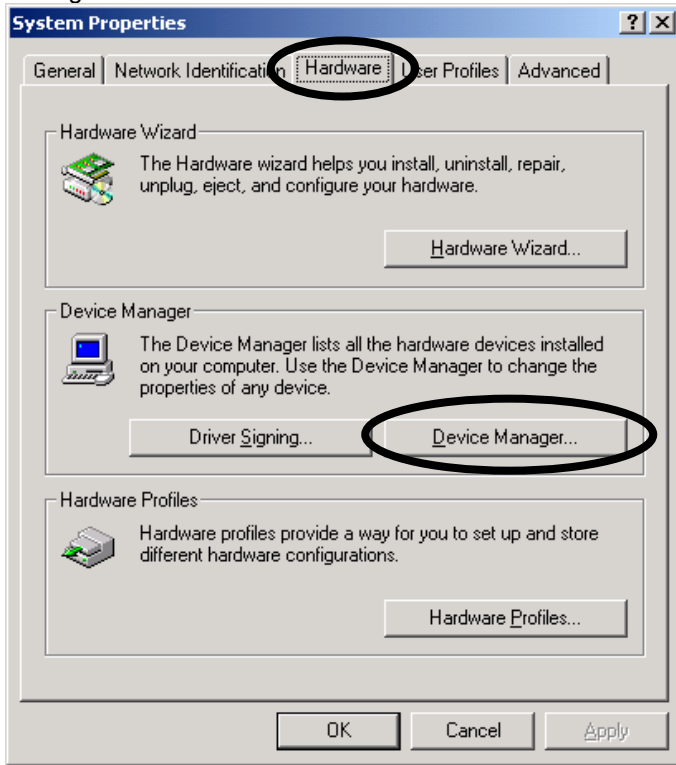
18. When the [Control Panel] dialog box appears, select “System”.



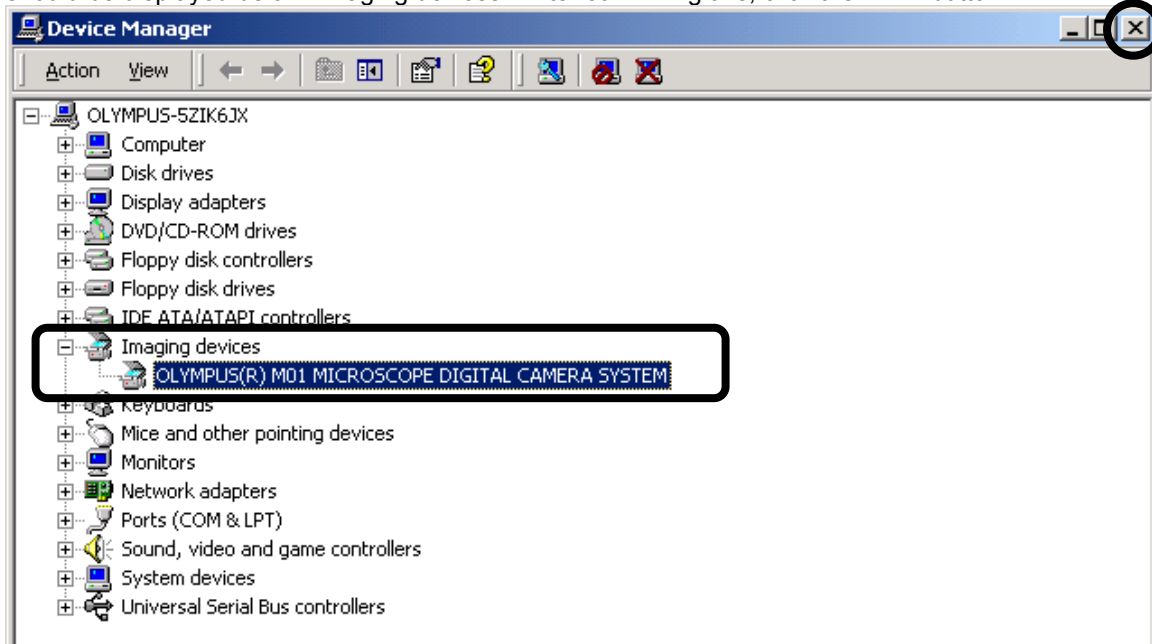
Driver Installation/Updating Procedure



19. When the [System Properties] dialog box appears, select the [Hardware] tab and click the <Device Manager> button.



20. If the driver has been properly updated, "OLYMPUS(R) M01 MICROSCOPE DIGITAL CAMERA SYSTEM" should be displayed below "Imaging devices". After confirming this, click the <X> button.





If marking such as “X”, “?” or “!” is attached to the icon on the left of “OLYMPUS(R) M01 MICROSCOPE DIGITAL CAMERA SYSTEM”, if a different name is displayed instead of “OLYMPUS(R) M01 MICROSCOPE DIGITAL CAMERA SYSTEM” or if “Imaging devices” is not displayed but “Unknown Device” or like is displayed below “Other devices”, the driver is not updated properly. In this case, update the driver again (see page 8)

(Examples of display after inappropriate driver updating)

